

October **MMU**

As part of our promise to provide our clients with the newest and most innovative materials sourced from around the world, we are pleased to present our monthly Materials Update. Here you will find the latest materials recently voted into our library through a jury selection process, which are now available on our database.

These materials can be seen online and onsite at our New York location. Select materials are also available at our international locations; please call or email us at any of the addresses listed for more information.

Interested in these materials but not a client?

Our subscription-based Materials Library is the world's largest library of advanced, innovative and sustainable materials and processes. With 30-40 new materials added every month, our libraries around the world give you immediate access to 7,500+ materials onsite and online, as well as Material Specialists and Monthly Updates on what's new.

Become a member of Material ConneXion today!

To find out more about membership levels and benefits, contact us at:
+1 212 842 2050 or access@materialconnexion.com

Index

carbon

cement

metal

glass

polymer

ceramic

process

natural

MC 2386-07

Dual sided shading fabric that combines the excellent heat reflectivity of a white fabric with the glare control and easy view-through of a dark-colored fabric, reducing fabric and room temperature.



MC 4585-04

Metal and concrete coatings applied to timber substrates that follow the grain of the wood underneath. Applications include signage, floors, walls, ceiling panels, furniture, railings and sculptures.



MC 5153-05

The proprietary process used to create this surfacing material results in zero porosity, dimensional stability, high flexural strength and resistance to heat, impact, abrasion, stains, microbes and weathering.



MC 6790-06

Material made from a part of the cattle stomach, which would otherwise be a waste by-product of the meat industry. Applications include interior decorative wallcoverings and artwork.



MC 6799-09

Embossed paper with the appearance of woven linen textiles; composed of Forest Stewardship Certified (FSC) pulp. Applications include packaging, book covers and printed media.



MC 6799-10

Glossy, embossed paper with the appearance of a woven linen textile. They can be processed with a variety of printing methods, as well as UV varnishing and hot foil stamping.



MC 6799-11

Iridescent and metallic papers containing Forest Stewardship Council (FSC) certified paper pulp. Due to the low absorbency of the paper, the shimmery effect of the surface remains visible even after printing.



MC 6799-12

Deep colored papers with a satin finish and a soft reflective effect. Containing Forest Stewardship Council (FSC) certified pulp, they have high scratch resistance, excellent lightfastness and are easily folded.



MC 6799-13

Gold and silver metallic papers containing Forest Stewardship Council (FSC) certified pulp. Due to the low absorbency of the paper, the metallic effect of the surface remains visible even after printing.



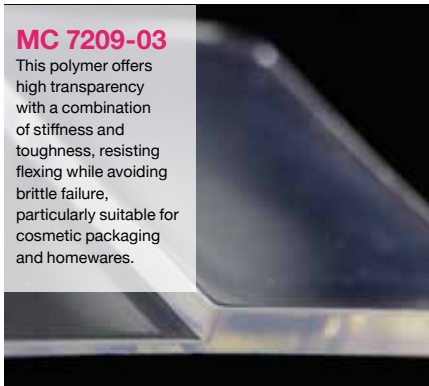
MC 6799-14

Smooth paper with a deep color and a dead-flat matte effect. Containing FSC certified pulp, these papers are resistant to fingerprints, have high scratch resistance, excellent lightfastness and are easily folded.



MC 7209-03

This polymer offers high transparency with a combination of stiffness and toughness, resisting flexing while avoiding brittle failure, particularly suitable for cosmetic packaging and homewares.



MC 7209-04

A styrene-butadiene block copolymer that exhibits the properties of an elastomer with high transparency and soft touch. Applications include multilayer films, packaging and polymer modification.



Index

carbon

cement

metal

glass

polymer

ceramic

process

natural

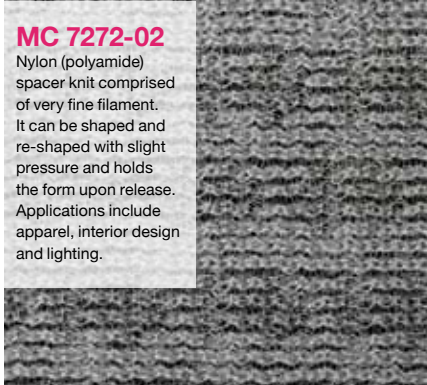
MC 7267-03

Range of plastic composites composed of recycled or virgin resins and fillers such as natural fibers, glass fiber or wood flour. Applications include molded consumer products or promotional goods.



MC 7272-02

Nylon (polyamide) spacer knit comprised of very fine filament. It can be shaped and re-shaped with slight pressure and holds the form upon release. Applications include apparel, interior design and lighting.



MC 7291-03

Decorative textile composed of 100% glass beads with a stitchable polyurethane (PU)-coated nonwoven backing. This is the industry's first stitchable glass beaded textile for upholstery.



MC 7306-01

Durable, smooth, modular triangular-shaped concrete tiles. The surface of the tiles has both concave and convex curves, as well as various depths so that once tessellated a larger aperiodic pattern is created.



MC 7318-01

Lightweight, smooth and flexible plywood sheets composed of multiple layers of ultra-thin wood veneer and a water-based adhesive. Applications include industrial parts, gift or key cards and marketing materials.



MC 7318-02

Wood veneer that can be commercially printed and converted just like paper. Applications include labels and packaging, signage and retail displays.



MC 7318-03

Ultra-thin translucent wood veneer with a polyester (PET) film backing. Pliable and conformable, it is intended to be laminated or adhered to fabric, corrugate cardboard, metal and MDF substrates.



MC 7319-01

Plain woven textile composed of 90% linen and 10% nylon that has been printed to mimic the natural patterns of marble. Applications include upholstery and accessories for residential interiors.



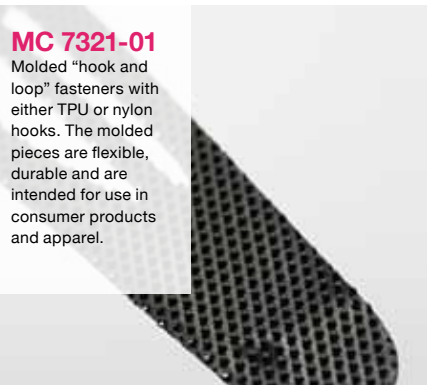
MC 7320-01

Hexagonal tiles composed of 100% recycled paper from a local garment factory's pattern leftovers. Applications include wall and ceiling treatments for commercial and residential spaces.



MC 7321-01

Molded "hook and loop" fasteners with either TPU or nylon hooks. The molded pieces are flexible, durable and are intended for use in consumer products and apparel.



MC 7321-02

Retroreflective coil zipper that can be overprinted with logos, text or patterns. Applications include sporting and safety apparel or accessories.



MC 7322-01

A collection of quilted or embellished faux leathers, animal skins and hammered or reflective metals overlaid with a PMMA acrylic. For vertical wallcoverings, shelving and cabinetry.



Index

carbon

cement

metal

glass

polymer

ceramic

process

natural

MC 7323-01

Concrete wall panels and tiles that are offered in a range of colors and finishes. Applications include vertical surfaces for residential and commercial interior and exterior uses.



MC 7323-02

Polished concrete flooring tile that is inherently durable and wear resistant. A variety of sizes and colors are offered, slight tonal shifts are found across the tiles due to the character of the concrete.



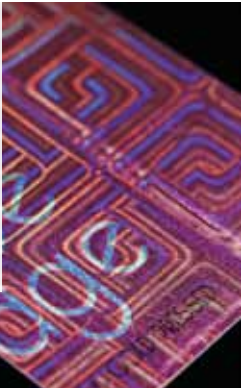
MC 7323-03

Polished concrete flooring tile that is inherently durable and wear resistant with a honed surface appearance. The tiles are suitable for high traffic residential and commercial interior applications.



MC 7324-01

Process that produces optic and haptic effects on paper, cardboard or films through the micro- and nano-scale modification of their surface. Applications include consumer electronics casings, labels and packaging.



MC 7326-01

An anti-fouling mesh that uses inorganic nanoparticles bound to the surface to aid in the meshes' self-cleaning. Applications include window screens, filters for air conditioners and vacuum cleaners.



MC 7326-02

Flexible, opaque waterproof breathable membrane mesh for use in filtration and for speaker meshes in smart phones. Dual PTFE films are used to block liquid water but allow water vapor and air to pass through.



MC 7328-01

Velvet-like knitted textile composed of 100% organic cotton, rather than synthetic fibers, like most conventional faux animal furs. Applications include apparel, costumes and cushions.



MC 7328-02

100% organic cotton plush knitted textile; the thick low-twist yarns of the pile are cut to create the tousled look of poodle hair. Composed of natural rather than synthetic fibers, it is absorbent and breathable.



MC 7329-01

Medium-weight high quality woven satin fabric. This smooth and durable fabric is composed of 100% silk. Applications include apparel such as wedding/ceremony dresses and accessories.



MC 7329-02

Heavyweight high quality woven satin fabric. This smooth and durable fabric is composed of 68% viscose and 32% silk. Applications include shoes, accessories, upholstery, wall coverings and drapes.



MC 7329-03

Waste selvage tapes from the production of silk satin fabrics. The tapes may be used for weaving and crocheting, and can be stitched or sewn; used in accessories, apparel, interiors and for gift boxes and bags.



MC 7330-01

Rigid boards comprised of waste beverage cartons, a multi-material laminate that is notoriously hard to recycle. The finished boards have high impact resistance, high bending strength and high mold resistance.



Index

carbon

cement

metal

glass

polymer

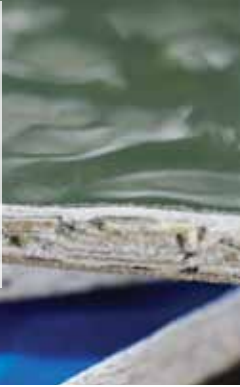
ceramic

process

natural

MC 7330-02

Ceiling tiles made from recycled beverage containers. The tiles themselves are recyclable at end-of-life. Applications include ceiling panels for suspended ceiling grids and decorative panels.



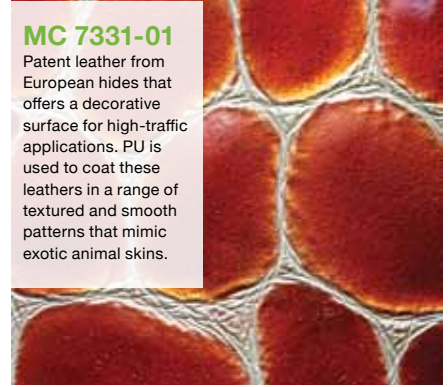
MC 7330-03

Recycled content board that visually features its source material: polyethylene coated beverage cartons, cups and other paper products. For decorative wallboard, furniture and retail displays.



MC 7331-01

Patent leather from European hides that offers a decorative surface for high-traffic applications. PU is used to coat these leathers in a range of textured and smooth patterns that mimic exotic animal skins.



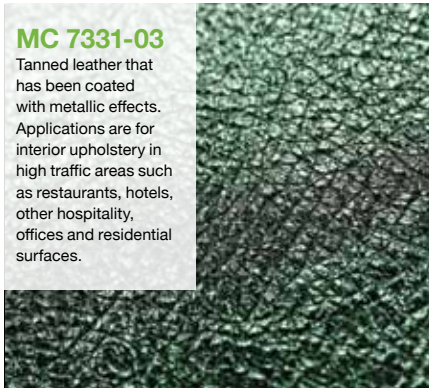
MC 7331-02

Tanned leather with stain resistant and easy-clean properties. The treatment is applied during the tanning and finishing process, penetrating the hide rather than being applied as a coating.



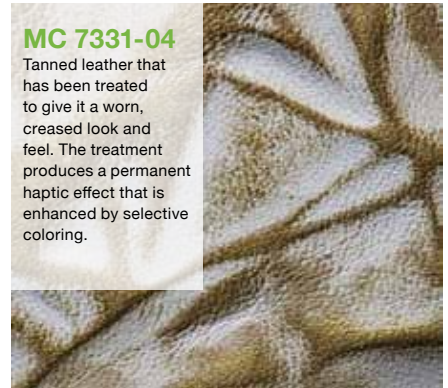
MC 7331-03

Tanned leather that has been coated with metallic effects. Applications are for interior upholstery in high traffic areas such as restaurants, hotels, other hospitality, offices and residential surfaces.



MC 7331-04

Tanned leather that has been treated to give it a worn, creased look and feel. The treatment produces a permanent haptic effect that is enhanced by selective coloring.



Andrew H. Dent, PhD

VP Library and Materials Research

Material ConneXion®

📞 +1 917 934 2895

✉️ adent@materialconnexion.com

🌐 materialconnexion.com

Chompoonuj Weerakitti

Director Library and Materials Research

Material ConneXion® Bangkok

📞 +66 (0) 2 664 8448

✉️ cweerakitti@materialconnexion.com

🌐 materialconnexion.com/th

Sun Ah Kim

Director Library and Consulting

Material ConneXion® Daegu

📞 +82 53 740 0033

✉️ sakim@materialconnexion.com

🌐 materialconnexion.com/kr

Micol Costi

Director Library and Materials Research

Material ConneXion® Italia

📞 +39 02 36553060/36553169

✉️ mcosti@materialconnexion.com

🌐 materialconnexion.com/it

Anders Brietholtz

Managing Director

Material ConneXion® Skövde

📞 +46 (0) 500 50 25 00

✉️ abrietholtz@materialconnexion.com

🌐 se.materialconnexion.com

Kumiko Yoshikawa

Chief Operating Officer

Material ConneXion® Tokyo

📞 +81 (0) 3 6721 1780

✉️ kyoshikawa@materialconnexion.com

🌐 materialconnexion.com/it



A SANDOW Company

1271 Avenue of the Americas

17th Floor

New York, NY 10020

📞 +1 212 842 2050

📞 +1 212 842 1090

materialconnexion.com