

August **MMU**

As part of our promise to provide our clients with the newest and most innovative materials sourced from around the world, we are pleased to present our monthly Materials Update. Here you will find the latest materials recently voted into our library through a jury selection process, which are now available on our database.

These materials can be seen online and onsite at our New York location. Select materials are also available at our international locations; please call or email us at any of the addresses listed for more information.

Interested in these materials but not a client?

Our subscription-based Materials Library is the world's largest library of advanced, innovative and sustainable materials and processes. With 30-40 new materials added every month, our libraries around the world give you immediate access to 7,500+ materials onsite and online, as well as Material Specialists and Monthly Updates on what's new.

Become a member of Material ConneXion today!

To find out more about membership levels and benefits, contact us at:
+1 212 842 2050 or access@materialconnexion.com

Index

carbon

cement

metal

glass

polymer

ceramic

process

natural

MC 0384-03

Lightweight, concrete finishing material for interior environments. Natural aggregates are incorporated into the cement/glass fiber reinforcement and are lighter than actual concrete, with added strength and flexibility.



MC 0384-04

Lightweight, glass fiber reinforced gypsum finishing material for interior environments that can be factory molded into any shape or size. It is considerably lighter and stronger than plaster castings.



MC 0384-05

Alpha gypsum-based material that imitates varieties of wood, including mahogany, oak, walnut, teak and pine. It is pre-finished with low VOC stains that accentuate the texture and depth of the molded grain.



MC 5357-02

Transparent, semi-rigid polymer film suitable for packaging applications. The film is produced from APET that uses ethanol derived from sugar cane as a raw material in its production.



MC 5357-03

Clear, semi-rigid packaging films that contain post-consumer recycled content. The film is produced using polyethylene terephthalate (PET) from both virgin sources and recycled beverage bottles.



MC 5830-09

Soft touch, anti-fingerprint, decorative high-pressure laminate (HPL) panel. The unique finishing process creates a surface that is resistant to abrasion and has the ability to thermally heal micro-scratches.



MC 5843-04

Mica and glass flake with a polymer and titanium-based coating to create dark colored pigment particles with reflectivity for a metallic look. Applications include specialty paint, inks, plastics and coatings.



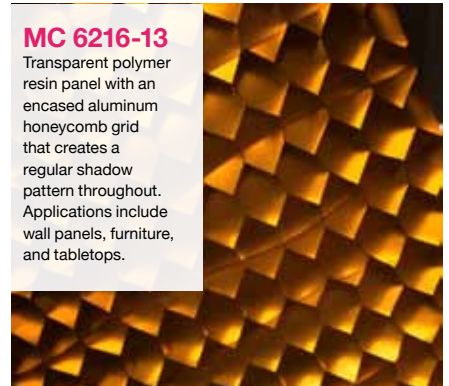
MC 6196-04

Rigid, lightweight, expanded foam panels used for home appliances that contain a phase change material (paraffin wax) to reduce the heat lost to temperature cycling typical in a home appliance.



MC 6216-13

Transparent polymer resin panel with an encased aluminum honeycomb grid that creates a regular shadow pattern throughout. Applications include wall panels, furniture, and tabletops.



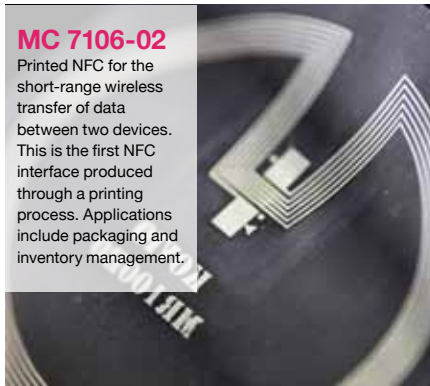
MC 6539-12

Handmade wallcovering composed of 50% natural banana bark, 40% paper board, 5% polyester thread and 5% non-woven material. Applications include wall coverings and furniture inlays.



MC 7106-02

Printed NFC for the short-range wireless transfer of data between two devices. This is the first NFC interface produced through a printing process. Applications include packaging and inventory management.



MC 7179-02

Antimicrobial pellets composed of 99.5% PP and 0.5% silver nanoparticles directly incorporated into the polymer matrix to prevent wearing off of the nanoparticles. For packaging and medical equipment.



Index

carbon

cement

metal

glass

polymer

ceramic

process

natural

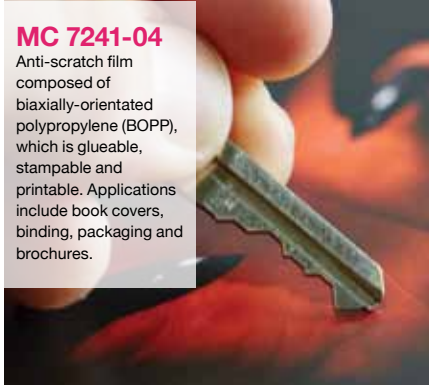
MC 7241-03

Clear, glossy film, composed of biaxially-orientated polypropylene (BOPP), which is glueable, stampable and printable. Applications include magazine and book covers, and packaging.



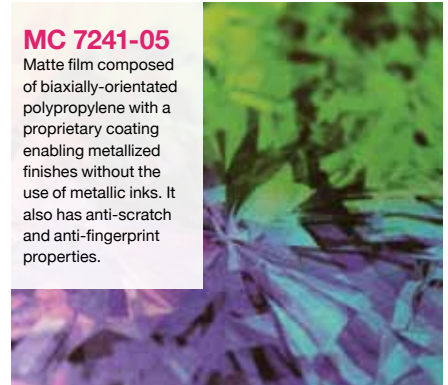
MC 7241-04

Anti-scratch film composed of biaxially-orientated polypropylene (BOPP), which is glueable, stampable and printable. Applications include book covers, binding, packaging and brochures.



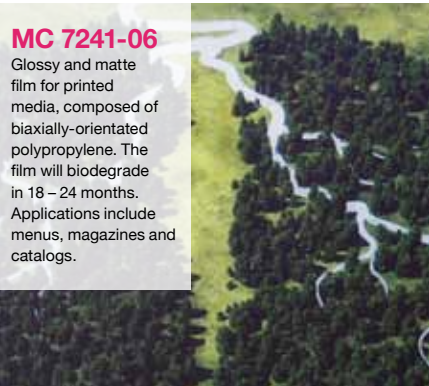
MC 7241-05

Matte film composed of biaxially-orientated polypropylene with a proprietary coating enabling metallized finishes without the use of metallic inks. It also has anti-scratch and anti-fingerprint properties.



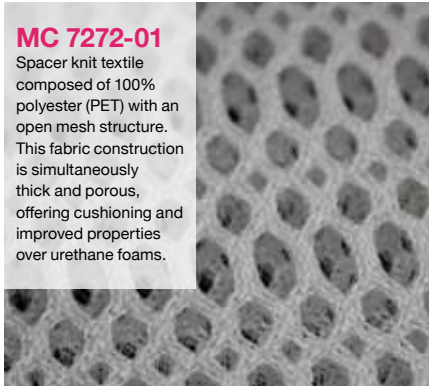
MC 7241-06

Glossy and matte film for printed media, composed of biaxially-orientated polypropylene. The film will biodegrade in 18 – 24 months. Applications include menus, magazines and catalogs.



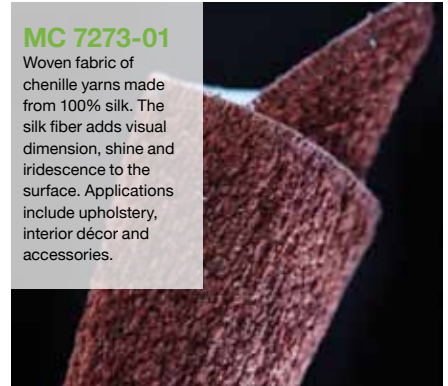
MC 7272-01

Spacer knit textile composed of 100% polyester (PET) with an open mesh structure. This fabric construction is simultaneously thick and porous, offering cushioning and improved properties over urethane foams.



MC 7273-01

Woven fabric of chenille yarns made from 100% silk. The silk fiber adds visual dimension, shine and iridescence to the surface. Applications include upholstery, interior décor and accessories.



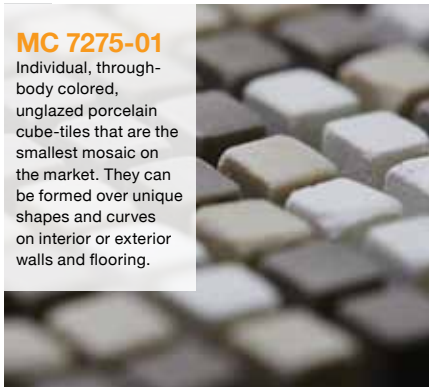
MC 7274-01

Range of cotton denim fabrics that are produced through a proprietary process for a unique dyeing effect. The indigo dye abrades from wash or wear to reveal the colored core of the yarn.



MC 7275-01

Individual, through-body colored, unglazed porcelain cube-tiles that are the smallest mosaic on the market. They can be formed over unique shapes and curves on interior or exterior walls and flooring.



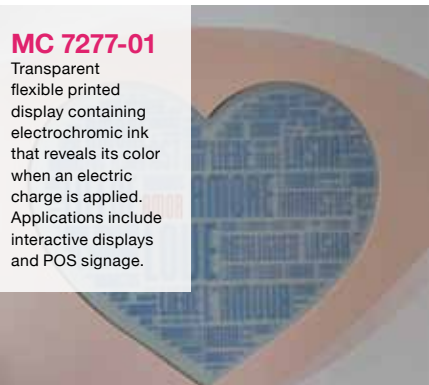
MC 7276-01

Nonwoven polyester blanket that has aerogel particulate (rigid silica gel) incorporated (50-70%), creating an effective barrier for extreme temperatures. Intended for footwear and outerwear.



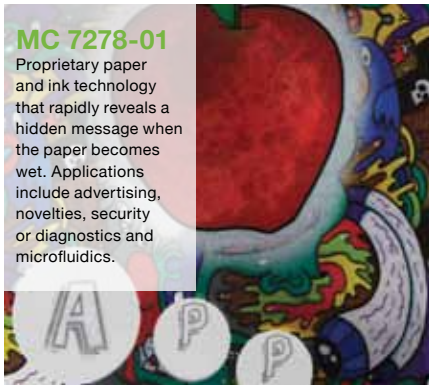
MC 7277-01

Transparent flexible printed display containing electrochromic ink that reveals its color when an electric charge is applied. Applications include interactive displays and POS signage.



MC 7278-01

Proprietary paper and ink technology that rapidly reveals a hidden message when the paper becomes wet. Applications include advertising, novelties, security or diagnostics and microfluidics.



MC 7279-01

A co-extruded sealant film that creates a color changing effect once peeled, aiding in the identification of tampering or counterfeiting. Applications include the packaging of food or medical equipment.



Index

carbon

cement

metal

glass

polymer

ceramic

process

natural

MC 7279-02

A process to include a watermark on plastic film, achieving a visual and haptic "tell" without altering the barrier or mechanical properties of the film. Applications include pharmaceutical and food packaging.



MC 7280-01

Viscose fiber that incorporates fish collagen for increased hydrophilicity to support moisture retention. Applications include intimate and sports apparel, linens and bedding, as well as accessories.



MC 7281-01

Dense, flexible cork tile that is suitable for a range of vertical interior surfaces, veneers and POP displays. The closed cell structure resists water and stains and naturally inhibits bacterial growth.



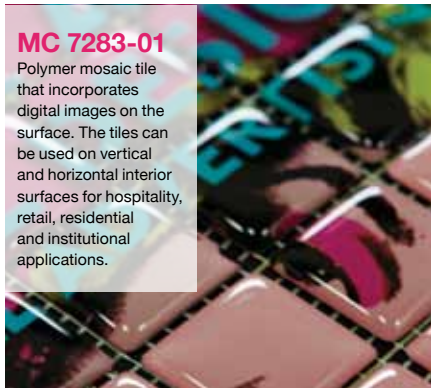
MC 7282-01

Wood plastic composite comprised of 80% polypropylene (PP) and 20% softwood powder. Applications include injection-molded products such as housewares, cutlery, toys, accessories and furniture.



MC 7283-01

Polymer mosaic tile that incorporates digital images on the surface. The tiles can be used on vertical and horizontal interior surfaces for hospitality, retail, residential and institutional applications.



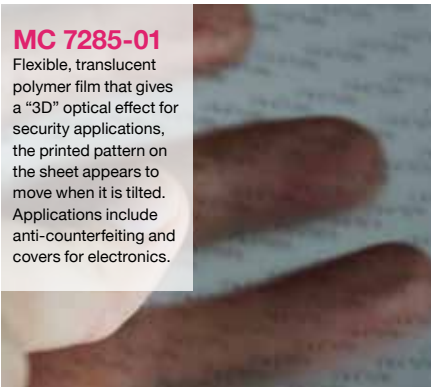
MC 7284-01

Handloom fabric produced from post-consumer recycled newspaper sheets that are dyed, cut into strips and woven into sheets. Applications include coverings for boxes, totes, purses, and for desktop accessories.



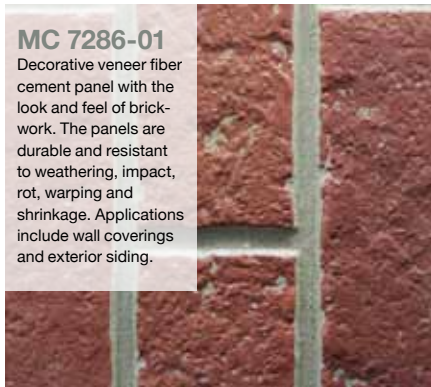
MC 7285-01

Flexible, translucent polymer film that gives a "3D" optical effect for security applications, the printed pattern on the sheet appears to move when it is tilted. Applications include anti-counterfeiting and covers for electronics.



MC 7286-01

Decorative veneer fiber cement panel with the look and feel of brickwork. The panels are durable and resistant to weathering, impact, rot, warping and shrinkage. Applications include wall coverings and exterior siding.



MC 7287-01

Poured epoxy flooring that uses colored stone for improved durability and slip resistance. It is suitable for use as flooring for industrial plants and for high traffic commercial floors such as hotels, resorts and malls.



MC 7287-02

Heavy-duty resin-based floor coating that is suitable for concrete in wet process areas, food and beverage plants, cold rooms and chilled packaging and processing plants.



MC 7288-01

Insulation made from rice straw, paper pulp and fire retardant. It is recyclable and free of asbestos, fiberglass, adhesives, formaldehyde and VOCs. Applications include insulation and decoration.



MC 7289-01

Wood or marble tile that incorporates Swarovski crystals embedded into the surface for decorative effect. The tiles are suitable for use as flooring, tabletops, countertops, head and footboards.



Index

carbon

cement

metal

glass

polymer

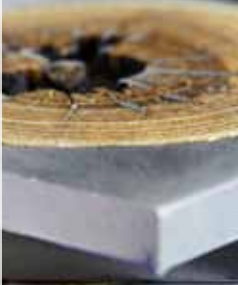
ceramic

process

natural

MC 7290-01

Composite rigid tiles that fuse sectioned cuts of wood with aluminum, previously unachievable due to the differing working temperatures. They are used as wall panels and other vertical surfaces for interiors.



MC 7291-01

Faux leather wall tiles that create an undulating three-dimensional effect. The tiles are an alternative to traditional ceramic and stone mosaics for interior walls and ceilings.



MC 7291-02

Decorative, padded faux-leather textile composed of 100% PU with a highly stain resistant surface. An ultrasonic sealing process is used to create the patterns on the surface of the PU.



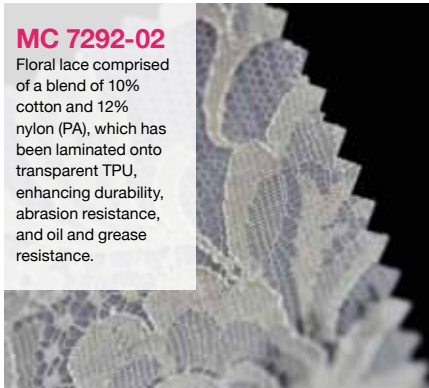
MC 7292-01

Lace comprised of 59% cotton and 41% nylon, which has been surface treated with a random "splatter" of soft silicone rubber. Applications include fashion, apparel, accessories, home décor and upholstery.



MC 7292-02

Floral lace comprised of a blend of 10% cotton and 12% nylon (PA), which has been laminated onto transparent TPU, enhancing durability, abrasion resistance, and oil and grease resistance.



MC 7293-01

Translucent salt bricks, which contain 84 trace minerals. Their increased hardness in comparison to conventional salts make them suitable for applications such as decorative walls or bar tops.



Andrew H. Dent, PhD

VP Library and Materials Research

Material ConneXion®

📞 +1 917 934 2895

✉️ adent@materialconnexion.com

🌐 materialconnexion.com

Chompoonuj Weerakitti

Director Library and Materials Research

Material ConneXion® Bangkok

📞 +66 (0) 2 664 8448

✉️ cweerakitti@materialconnexion.com

🌐 materialconnexion.com/th

Sun Ah Kim

Director Library and Consulting

Material ConneXion® Daegu

📞 +82 53 740 0033

✉️ sakim@materialconnexion.com

🌐 materialconnexion.com/kr

Micol Costi

Director Library and Materials Research

Material ConneXion® Italia

📞 +39 02 36553060/36553169

✉️ mcosti@materialconnexion.com

🌐 materialconnexion.com/it

Anders Brietholtz

Managing Director

Material ConneXion® Skövde

📞 +46 (0) 500 50 25 00

✉️ abrietholtz@materialconnexion.com

🌐 se.materialconnexion.com

Kumiko Yoshikawa

Chief Operating Officer

Material ConneXion® Tokyo

📞 +81 (0) 3 6721 1780

✉️ kyoshikawa@materialconnexion.com

🌐 materialconnexion.com/it



A SANDOW Company

1271 Avenue of the Americas

17th Floor

New York, NY 10020

📞 +1 212 842 2050

📞 +1 212 842 1090

materialconnexion.com