

JuneMMU

As part of our promise to provide our clients with the newest and most innovative materials sourced from around the world, we are pleased to present our monthly Materials Update. Here you will find the latest materials recently voted into our library through a jury selection process that are now available on our database.

These materials can be seen online and onsite at our New York location. Select materials are also available at our international locations; please call or email us at any of the addresses listed for more information.

Interested in these materials but not a client?

Our subscription-based Materials Library is the world's largest library of advanced, innovative and sustainable materials and processes. With 30-40 new materials added every month, our libraries around the world give you immediate access to 7,500+ materials onsite and online, as well as Material Specialists and Monthly Updates on what's new.

Become a member of Material ConneXion today!

To find out more about membership levels and benefits, contact us at:
+1 212 842 2050 or access@materialconnexion.com

Index

carbon

cement

metal

glass

polymer

ceramic

process

natural

MC 1252-04

Decorative architectural glass designs inspired by everyday objects and natural motifs. The glass is non-porous, hygienic and can easily withstand daily cleaning and sanitizing with most commercial cleaners.



MC 1252-05

Decorative, laminated safety glass. The laminated glass offers safety and enhanced sound control properties. The glass is non-porous, hygienic and can easily withstand daily cleaning and sanitizing with most commercial cleaners.



MC 1845-05

Modular carpet tiles composed of 100% recycled waste-fishing nets collected from the ocean. This project helps clean the beaches and waters of the Danajon bank in the Philippines.



MC 2499-13

Viscose fiber made from wood pulp with a fine fiber size and soft hand. This fiber has been designed and fabricated such that it has inherent properties of water repellency (hydrophobic) and oil absorption (oleophilic) simultaneously.



MC 2687-31

Light reflecting, mulberry and rayon fiber paper wallcovering that looks similar to silk and velvet. The paper is a recycled material and has a stain resistant coating that makes it suitable for high-traffic areas.



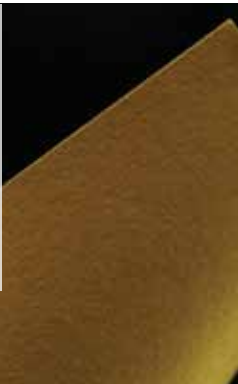
MC 2687-32

Hand-painted wallcovering that incorporates metallic pigments in a random pattern. This method is a cost-effective alternative to metal leafing.



MC 3410-03

Decorative paper that uses bagasse fiber as a major constituent. It is an alternative to paper from tree sources, and is produced using waste and by-products from existing industries.



MC 5056-10

Braided floorcovering composed of 75% wood fiber (as paper) and 25% cotton, with a woven jute backing. The contrast in color and texture of the soft cotton chenille yarns and the paper creates a subtle pinstripe effect across the material.



MC 5056-11

Woven textile composed of 54% cellulose (as paper) and 46% cotton, with a foam backing. The surface has been embossed with a crocodile skin pattern and the raised sections, then stained in a contrasting color for decorative effect.



MC 5429-23

Paper that is fingerprint and abrasion resistant. The paper is FSC certified and suitable for printing and finishing techniques, lithography, letterpress, embossing, debossing, silk-screening, die stamping and foil blocking.



MC 5463-11

Decorative mosaic panels composed of cast polymer resin tiles. The tile material is lighter and more flexible than glass and ceramic tiles, has low water absorption, is chemically resistant and contain no VOCs.



MC 5463-12

Decorative floral mosaic panels comprised of individual composite pieces mounted onto easy-to-install sheets. The thinness of the panel can be applied to corners, curved areas and edges.



Index

carbon

cement

metal

glass

polymer

ceramic

process

natural

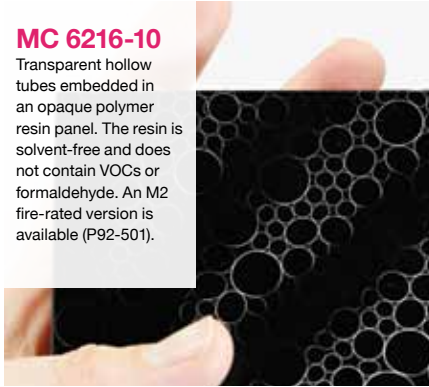
MC 5732-02

Glass panel with a diamond-like carbon coating. The combination of high clarity with high scratch and wear resistance in the same material is unique, offering an increased lifespan over competitive materials.



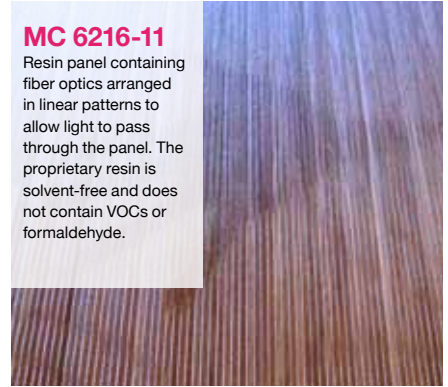
MC 6216-10

Transparent hollow tubes embedded in an opaque polymer resin panel. The resin is solvent-free and does not contain VOCs or formaldehyde. An M2 fire-rated version is available (P92-501).



MC 6216-11

Resin panel containing fiber optics arranged in linear patterns to allow light to pass through the panel. The proprietary resin is solvent-free and does not contain VOCs or formaldehyde.



MC 6455-02

Flexible re-closeable fastener composed of self-mating micro-hooks, polyethylene in composition. This closure does not require precise alignment in order to fasten and it is light yet rigid so the package top does not fold over.



MC 6930-05

Unglazed porcelain tile composed of quartz, clay, kaolin, feldspar and silica. The tiles are crack-, mold-, abrasion- and impact-resistant, heat- and frost- proof bonded, and contains no VOC emissions with 0.1% water absorption.



MC 6930-06

Unglazed, lineal porcelain tiles composed of quartz, clay, kaolin, feldspar and silica. Tiles are crack, mold, abrasion and impact resistant, heat and frost proof bonded, with no artificial additives.



MC 7238-02

Natural down treated with a water resistant coating, which allows the down to be thermally insulating even in wet conditions.



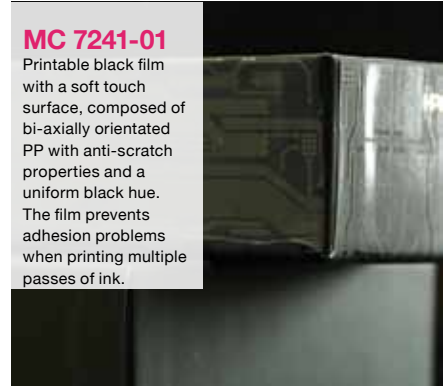
MC 7240-01

Elastomeric rapid prototyping raw material that produce high elasticity parts and are suitable for direct drive extrusion 3D printers such as MakerBot Replicator 1, 2 and 2x as well as the RepRap and Ordbot.



MC 7241-01

Printable black film with a soft touch surface, composed of bi-axially orientated PP with anti-scratch properties and a uniform black hue. The film prevents adhesion problems when printing multiple passes of ink.



MC 7242-01

Range of pleated opaque textiles of various fiber compositions and weave construction. Shadows and tonal effects create depth and texture for all over 3D patterns.



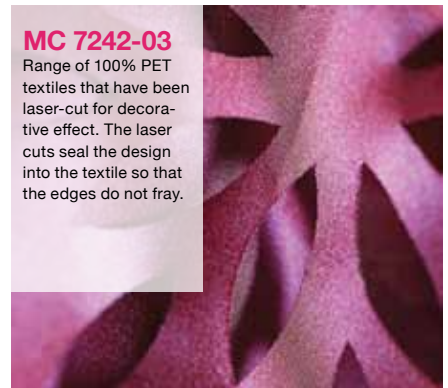
MC 7242-02

Range of pleated sheer textiles of various PET fiber compositions and weave constructions. The synthetic composition ensures the heat-pressed pleats remain permanent to allow for machine washing and drying.



MC 7242-03

Range of 100% PET textiles that have been laser-cut for decorative effect. The laser cuts seal the design into the textile so that the edges do not fray.



Index

carbon

cement

metal

glass

polymer

ceramic

process

natural

MC 7243-01

Flexible, thin LED light 'rope' encased in clear silicone. This light strip has high flexibility and is able to bend completely in half. The flexible silicone exterior protects the diodes from mechanical and water damage.



MC 7244-01

High-performance fabrics composed of wicking polyester yarn, alone or in blends with other fibers. The filaments transfer moisture along the length of the fiber via capillary action to create quick-drying and breathable garments.



MC 7245-01

A process for the rapid manufacturing of seamless three-dimensional contoured spacer textiles. Various profiles and shapes may be created out of this one-step knitting process.



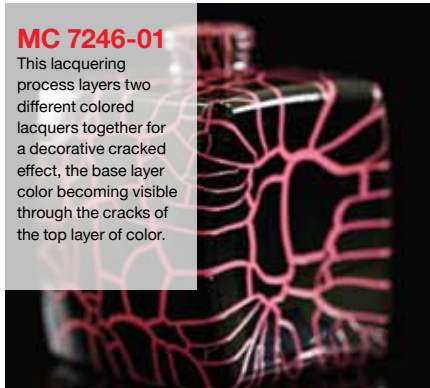
MC 7245-02

Non-crimp knitted textile with biaxial reinforcement fibers, which can absorb large mechanical tensile forces. This fabric does not have any woven interlacings so the yarns do not crimp and the yarns are not punctured by the needle.



MC 7246-01

This lacquering process layers two different colored lacquers together for a decorative cracked effect, the base layer color becoming visible through the cracks of the top layer of color.



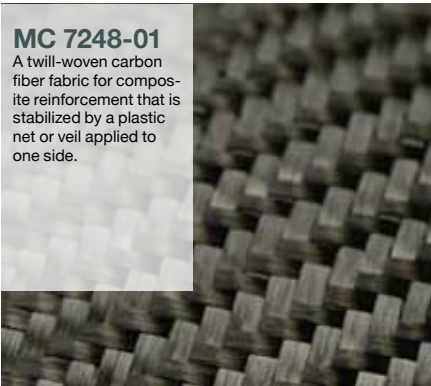
MC 7247-01

Lightweight, high-performance woven textile that contains Innegra™ S alone or in combination with aramid, carbon or glass fibers. These materials offer improvements in impact resistance and vibration dampening.



MC 7248-01

A twill-woven carbon fiber fabric for composite reinforcement that is stabilized by a plastic net or veil applied to one side.



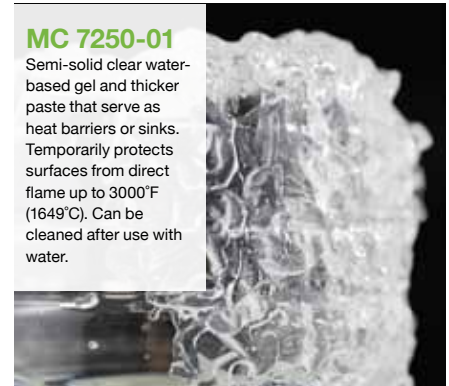
MC 7249-01

Acoustically absorbent 3D wallcovering made from 100% recycled plastic bottles. Has an NRC of up to 0.25, and is able to absorb ambient noise and reduce noise 'spillage.'



MC 7250-01

Semi-solid clear water-based gel and thicker paste that serve as heat barriers or sinks. Temporarily protects surfaces from direct flame up to 3000°F (1649°C). Can be cleaned after use with water.



MC 7251-01

Chemical-free, backyard compostable and fair trade woven fabrics composed of 96-99% natural unadulterated plant fiber, including bamboo, hemp, wood reed, jute, sisal, cotton and other cellulosic plant fibers.



MC 7252-01

Rigid, porous ceramic structures comprised of aluminum oxide, silicon carbide, or a blend of the two. Filter removes particulate from liquid and gas media in extreme temperatures and acidic environments.



MC 7253-01

Lightweight, insulating rigid PU foam composed of 99% post-production polyurethane off-cuts. Dimensionally stable and resistant to humidity and corrosion. Will keep holding for the life of the product or construction.



Index

carbon

cement

metal

glass

polymer

ceramic

process

natural

MC 7253-02

Fiberglass board composed of epoxybond glass fiber, recycled from wind turbine blade production. Stronger than traditional glass fiber sheets with a higher strength to weight ratio than medium carbon steel.

MC 7254-01

Woven textile that acts as a blast mitigation surface by expanding its surface when stretched. It is referred to as 'auxetic' material and has a negative Poisson's ratio.

MC 7255-01

Moldable non-wood paper pulp composed of renewable natural fibers and FDA approved additives. Intended for disposable applications.

MC 7256-01

Acoustic and thermal insulation containing milkweed fiber. Hollow structure of milkweed fiber provides inherent acoustic and thermal insulation nearly equivalent to goose down.

MC 7257-01

Liquid silicone rubber injection molding for high-performance applications. Process uses LSR to create high-precision, high-clarity parts that are suitable for medical use.

MC 7258-01

High-performance, polyurethane-based paints and coatings for industrial applications. Coatings have excellent durability and color retention.

Andrew H. Dent, PhD

VP Library and Materials Research

Material ConneXion®

📞 +1 917 934 2895

✉️ adent@materialconnexion.com

🌐 materialconnexion.com

Chompoonuj Weerakitti

Director Library and Materials Research

Material ConneXion® Bangkok

📞 +66 (0) 2 664 8448

✉️ cweerakitti@materialconnexion.com

🌐 materialconnexion.com/th

Karsten Bleymehl

Director Library and Materials Research

Material ConneXion® Cologne

📞 +49 (0) 221 99 22 28 22

✉️ kbleymehl@materialconnexion.com

🌐 materialconnexion.com/de

Sun Ah Kim

Director Library and Consulting

Material ConneXion® Daegu

📞 +82 53 740 0033

✉️ sakim@materialconnexion.com

🌐 materialconnexion.com/kr

Micol Costi

Director Library and Materials Research

Material ConneXion® Italia

📞 +39 02 36553060/36553169

✉️ mcosti@materialconnexion.com

🌐 materialconnexion.com/it



A SANDOW Company

1271 Avenue of the Americas

17th Floor

New York, NY 10020

📞 +1 212 842 2050

📞 +1 212 842 1090

materialconnexion.com