

# JUNE 2012 MATERIALS UPDATE

## Material ConneXion®

As part of our promise to provide our clients with the newest and most innovative materials sourced from around the world, we are pleased to present our monthly Materials Update. Here you will find the latest materials to have been added to the database, upon their acceptance by our regular jury process.

These materials can be seen online and on-site at our New York location. Selected materials are also available at our Cologne, Daegu, Milan, and Bangkok locations; please call or email us at any of the addresses listed for more information.

**Interested in these materials but not a client?** Our subscription-based Materials Library is the world's largest library of advanced, innovative and sustainable materials and processes. With 45-60 new materials added every month, our libraries around the world give you immediate access to 6,500+ materials onsite and online, Material Specialists and Monthly Updates on what's new.

**Become a member of Material ConneXion® today!**

### Contact us at:

212 842 2050 or [access@materialconnexion.com](mailto:access@materialconnexion.com) to find out about more about membership levels and benefits.

### Need hands-on expertise?

Our Advanced Material Solutions Team™ provides a wide array of consulting services.

### Contact us at:

[consulting@materialconnexion.com](mailto:consulting@materialconnexion.com)

**Andrew H. Dent, PhD**  
Vice President, Library & Material Research

### Material ConneXion®

**P:** +1 212 842 2050  
**E:** [adent@materialconnexion.com](mailto:adent@materialconnexion.com)  
**W:** [www.materialconnexion.com](http://www.materialconnexion.com)

**Chompoonuj Weerakitti**  
Director, Library & Materials Research

### Material ConneXion® Bangkok

**P:** +66 (0) 2 664 8448  
**E:** [cweerakitti@materialconnexion.com](mailto:cweerakitti@materialconnexion.com)  
**W:** [www.materialconnexion.com/th](http://www.materialconnexion.com/th)

**Karsten Bleyemehl**  
Director, Library & Materials Research

### Material ConneXion® Cologne

**P:** +49 (0) 221 99 22 28 22  
**E:** [kbleyemehl@materialconnexion.com](mailto:kbleyemehl@materialconnexion.com)  
**W:** [www.materialconnexion.com/de](http://www.materialconnexion.com/de)

**Sun Ah Kim**  
Director of Library & Consulting

### Material ConneXion® Daegu

**P:** +82 53 740 0033  
**E:** [sakim@materialconnexion.com](mailto:sakim@materialconnexion.com)  
**W:** [www.materialconnexion.com/kr](http://www.materialconnexion.com/kr)

**Micol Costi**  
Director, Library & Materials Research

### Material ConneXion® Milano

**P:** +39 02 36553060/36553169  
**E:** [mcosti@materialconnexion.com](mailto:mcosti@materialconnexion.com)  
**W:** [www.materialconnexion.com/it](http://www.materialconnexion.com/it)

# JUNE 2012 MATERIALS UPDATE

Material ConneXion®

## CATEGORY INDEX

Carbon

Cement

Metal

Glass

Polymer

Ceramic

Natural

Process

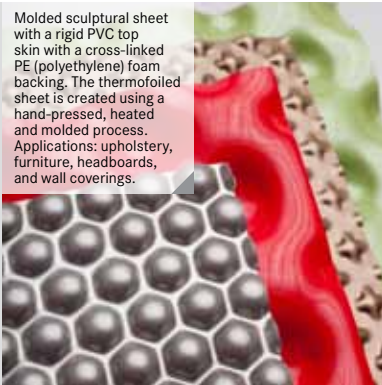
**MC#: 2687-20**

Wallcovering composed of latex saturated paper with an embossed "crocodile skin" effect. Inks used in manufacturing this wallcovering are chlorine-free, pH neutral and completely non-toxic with no ozone depleting chemicals. Applications: interior residential wall coverings.



**MC#: 5268-02**

Molded sculptural sheet with a rigid PVC top skin with a cross-linked PE (polyethylene) foam backing. The thermofoiled sheet is created using a hand-pressed, heated and molded process. Applications: upholstery, furniture, headboards, and wall coverings.



**MC#: 5463-09**

Decorative mosaic tiles composed of polyester resin with up to 20% mineral fillers. These resin surfaces are available in four patterns (Capiz and Hawaiian Honey). Applications include interior design, wall and ceiling coverings, furniture and indoor use.



**MC#: 2687-17**

Wallcovering textiles composed of a polyester-acetate blend with a polyester non-woven backing and a formaldehyde-free adhesive. Current applications are for interior residential wall coverings.



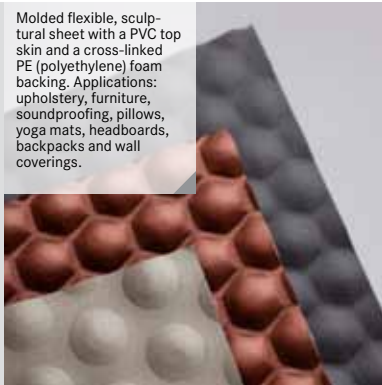
**MC#: 2771-04**

Fast-dry synthetic paper extruded from polypropylene pellets. This flexible paper is 100% waterproof, 80% faster drying than standard paper, tear-resistant, stain resistant and does not require surface treatment before printing. Applications: labeling and packaging.



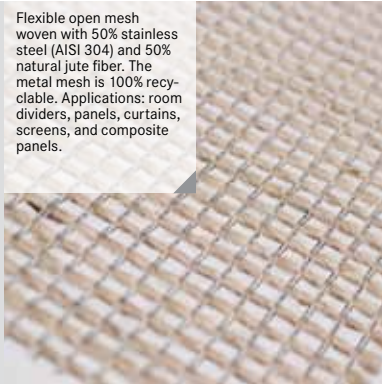
**MC#: 5268-03**

Molded flexible, sculptural sheet with a PVC top skin and a cross-linked PE (polyethylene) foam backing. Applications: upholstery, furniture, soundproofing, pillows, yoga mats, headboards, backpacks and wall coverings.



**MC#: 5509-03**

Flexible open mesh woven with 50% stainless steel (AISI 304) and 50% natural jute fiber. The metal mesh is 100% recyclable. Applications: room dividers, panels, curtains, screens, and composite panels.



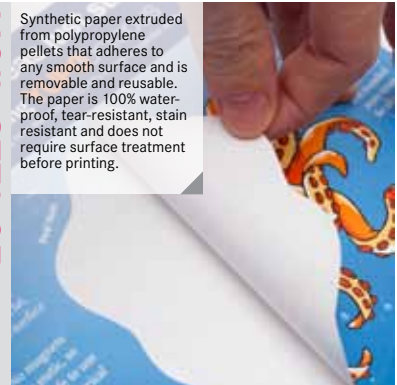
**MC#: 2687-19**

Wallcovering composed of kenaf reed, a rapidly renewable plant, and natural grass fibers backed with 100% pre-consumer recycled paper that has been dyed with water-based and heavy metal-free colorant. Applications: interior residential wall coverings.



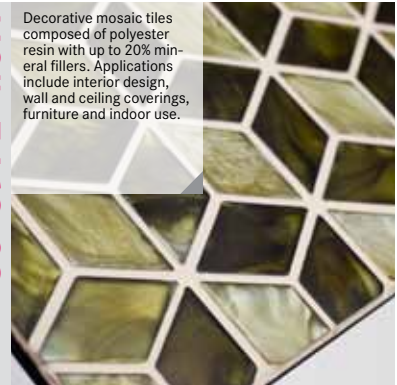
**MC#: 2771-05**

Synthetic paper extruded from polypropylene pellets that adheres to any smooth surface and is removable and reusable. The paper is 100% waterproof, tear-resistant, stain resistant and does not require surface treatment before printing.



**MC#: 5463-08**

Decorative mosaic tiles composed of polyester resin with up to 20% mineral fillers. Applications include interior design, wall and ceiling coverings, furniture and indoor use.



**MC#: 5830-08**

Decorative high-pressure laminates that are individually handcrafted and therefore subject to differences in appearance. The metal is fire retardant, wear-resistant and hygienic. Applications: commercial and residential wall, countertop and furniture surfaces.



# JUNE 2012 MATERIALS UPDATE

Material ConneXion®

## CATEGORY INDEX

Carbon

Cement

Metal

Glass

Polymer

Ceramic

Natural

Process

MC#: 6125-03

High performance, coated, FSC certified paper. This paper provides a consistent print uniformity and fade resistant coating formulation. Applications include books, brochures, posters, calendars, catalogs, direct mail, presentation folders, inserts and leaflets.



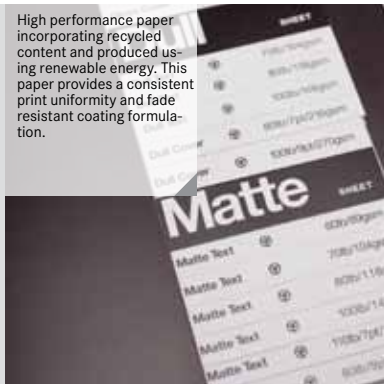
MC#: 6125-04

High performance paper incorporating recycled content. This paper provides a consistent print uniformity and fade resistant coating formulation. Applications include books, brochures, catalogs, direct mail, inserts and magazines.



MC#: 6125-05

High performance paper incorporating recycled content and produced using renewable energy. This paper provides a consistent print uniformity and fade resistant coating formulation.



MC#: 6125-06

High performance paper incorporating recycled content and produced using renewable energy. This high quality paper provides a consistent print uniformity and fade resistant coating formulation.



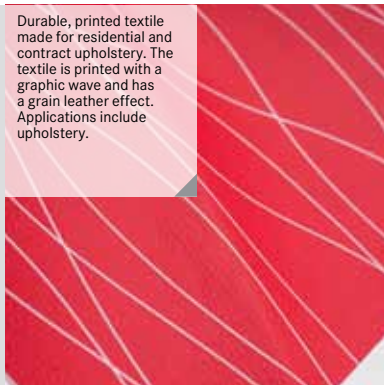
MC#: 6528-10

Quilted textile with foam backing for residential and contract upholstery. It has a geometrical design pattern achieved through a technique typical of the quilting industry. Applications include upholstery.



MC#: 6528-11

Durable, printed textile made for residential and contract upholstery. The textile is printed with a graphic wave and has a grain leather effect. Applications include upholstery.



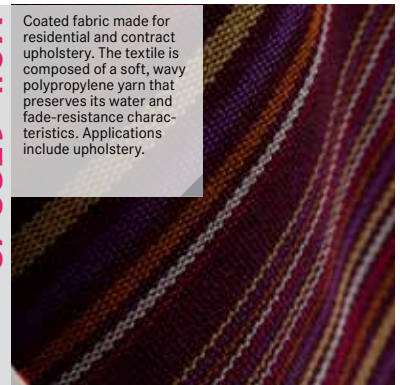
MC#: 6528-12

Flame retardant, coated fabric for residential and contract upholstery. It is a microfiber fabric composed of 100% polyester face and 100% cotton backing. Applications include upholstery.



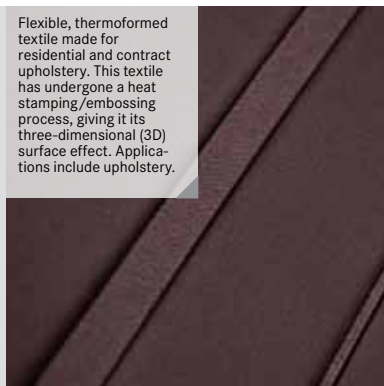
MC#: 6528-13

Coated fabric made for residential and contract upholstery. The textile is composed of a soft, wavy polypropylene yarn that preserves its water and fade-resistance characteristics. Applications include upholstery.



MC#: 6528-14

Flexible, thermoformed textile made for residential and contract upholstery. This textile has undergone a heat stamping/embossing process, giving it its three-dimensional (3D) surface effect. Applications include upholstery.



MC#: 6758-02

Large scale print film for walls that is easily removable, replaceable and customizable. Using magnet laden paint or a flexible low-profile, magnetic back substrate is applied to a wall. Applications are commercial, hospitality, retail, and signage.



MC#: 6889-03

Synthetic leather consisting of a polyurethane face and a nylon backing. It has high abrasion resistance, dimensional stability, physical and mechanical strength, light fastness, cleanability, and water repellency. It is much lighter than leather of the same thickness.



# JUNE 2012 MATERIALS UPDATE

Material ConneXion®

## CATEGORY INDEX

Carbon

Cement

Metal

Glass

Polymer

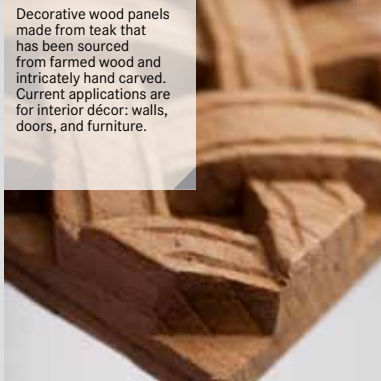
Ceramic

Natural

Process

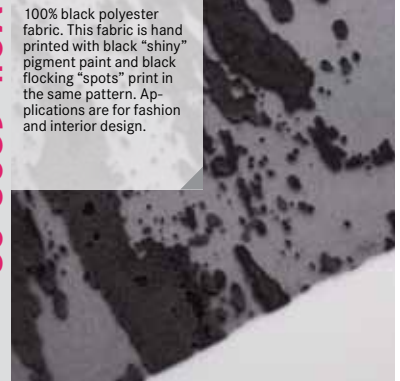
MC#: 6904-01

Decorative wood panels made from teak that has been sourced from farmed wood and intricately hand carved. Current applications are for interior décor: walls, doors, and furniture.



MC#: 6908-03

100% black polyester fabric. This fabric is hand printed with black "shiny" pigment paint and black flocking "spots" print in the same pattern. Applications are for fashion and interior design.



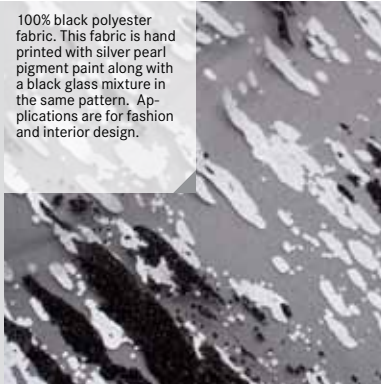
MC#: 6908-04

100% black polyester fabric. This fabric is hand printed with black "shiny" pigment paint along with a metal sand mixture in the same pattern. Applications are for fashion and interior design.



MC#: 6908-05

100% black polyester fabric. This fabric is hand printed with silver pearl pigment paint along with a black glass mixture in the same pattern. Applications are for fashion and interior design.



MC#: 6908-06

100% grey polyester with a metalized, steel-coated back; that has a light transmission index of 55% and a light reflection index of 17%. This fabric is hand printed with metal and sand in an organic pattern. Applications are for fashion, interior design and window treatments.



MC#: 6908-07

100% off-white polyester fabric. This fabric is hand printed with white sand in an organic pattern. Applications are for fashion and interior design.



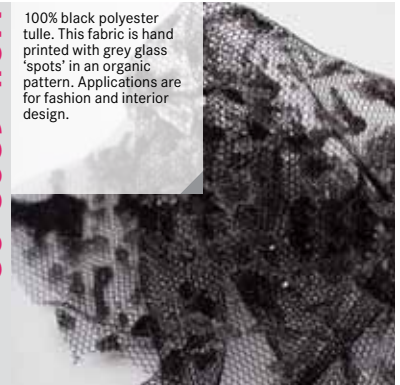
MC#: 6908-08

100% white polyester fabric. This fabric is hand printed with black and white sand in an organic pattern. Applications are for fashion and interior design.



MC#: 6908-09

100% black polyester tulle. This fabric is hand printed with grey glass "spots" in an organic pattern. Applications are for fashion and interior design.



MC#: 6908-10

100% silk organza (thin, plain weave, sheer fabric). This fabric is hand painted and dyed black with dark grey glass print in an organic pattern. Applications are for fashion and interior design.



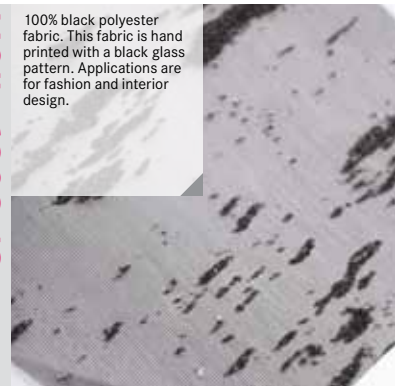
MC#: 6908-11

100% silk organza (thin, plain weave, sheer fabric). This fabric is hand painted and dyed blue/black with white sand print in an organic pattern. Applications are for fashion and interior design.



MC#: 6908-12

100% black polyester fabric. This fabric is hand printed with a black glass pattern. Applications are for fashion and interior design.



# JUNE 2012 MATERIALS UPDATE

Material ConneXion®

## CATEGORY INDEX

Carbon

Cement

Metal

Glass

Polymer

Ceramic

Natural

Process

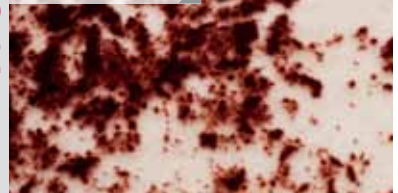
MC#: 6908-13

100% black silk organza (thin, plain weave, sheer fabric). This fabric is hand printed with red glass together with metal sand in a 'rococo' floral pattern. Applications are for fashion and interior design.



MC#: 6908-14

100% off white soft wool fabric. This fabric is hand printed with maroon flocking in an organic pattern. Applications are for fashion and interior design.



MC#: 6908-15

75% metal and 25% polyester fabric. This fabric is hand printed with black shiny pigment together with glass print in a shadow effect. Applications are for fashion and interior design.



MC#: 6910-01

Solid sheets that offer higher impact resistance and lighter weight than glass in similar applications. These rigid sheets are comprised of 100% polycarbonate (PC) and produced by extrusion. Applications: advertising, signage and safety equipment.



MC#: 6910-02

Solid sheets that offer glass-like transparency with a wide variety of processing options. These panels are made of 100% acrylic and extruded into sheet form. Applications: advertising, POP displays, interior architecture, construction, noise barriers, and furniture.



MC#: 6910-03

Lightweight, translucent and extremely strong multi-wall sheets made from 100% polycarbonate via extrusion process. Applications: high impact construction such as green houses, roofs, walkways, gymnasiums, and advertising sign panels.



MC#: 6911-01

Structural gratings for walkways that exhibit high performance characteristics while retaining light weight. They are comprised of a 40% glass fiber and 60% polyester resin composite. Applications: industrial flooring; also used for drainage.



MC#: 6917-01

A process for the dyeing of fabrics without the use of water. Entire bolts of fabric may be permanently colored in one step using supercritical CO2 as a carrier for the pigment into the yarns of the woven or knit fabric. Applications are anything requiring dyed textiles.



MC#: 6919-01

Wood plastic composite (WPC) composed of 70% wood fibers and 30% plastic. It uses a harder PVC rather than the standard softer HDPE or PP. Applications are for cladding.

