

FEBRUARY 10 MATERIALS UPDATE

Material ConneXion®

As part of our continuing efforts to provide our clients with the newest and most innovative materials sourced from around the world, we are pleased to present our monthly Materials Update. Here you will find the latest materials to have been added to the database, upon their acceptance by our regular jury process.

These materials can be seen online and on-site at our New York location. Selected materials are also available at our Cologne, Daegu, Milan, and Bangkok locations; please call or email us at any of the addresses listed for more information.

Interested in these materials but not a client? Our subscription-based Materials Library is the world's largest library of advanced, innovative and sustainable materials and processes. With 45-60 new materials added every month, our libraries around the world give you immediate access to over 4,500 materials onsite and online, Material Specialists and Monthly Updates on what's new.

Become a member of Material ConneXion® today!

Contact us at 212 842 2050 or access@materialconnexion.com to find out about more about membership levels and benefits.

Need hands-on expertise?

Our Advanced Material Solutions Team™ provides a wide array of consulting services. Contact us at consulting@materialconnexion.com or call today.

Andrew H. Dent, PhD

Vice President, Library & Material Research

Material ConneXion®

P +1 212 842 2050

E adent@materialconnexion.com

W www.materialconnexion.com

Chompoonuj Weerakitti

Director, Library & Materials Research

Material ConneXion® Bangkok

P +66 (0) 2 664 8448

E cweerakitti@materialconnexion.com

W www.materialconnexion.com/th

Karsten Bleyemehl

Director, Library & Materials Research

Material ConneXion® Cologne

P +49 (0) 221 99 22 28 - 22

E kbleyemehl@materialconnexion.com

W www.materialconnexion.com/de

Sun Ah Kim

Director of Library & Consulting

Material ConneXion® Daegu

P +82 53 740 0033

E sakim@materialconnexion.com

W www.materialconnexion.com/kr

Micol Costi

Director, Library & Materials Research

Material ConneXion® Milano

P +39 02 39 32 55 85

E mcosti@materialconnexion.com

W www.materialconnexion.com/it

FEBRUARY 10 MATERIALS UPDATE

Material ConneXion®

CATEGORY INDEX

Carbon	Cement
Metal	Glass
Polymer	Ceramic
Natural	Process

MC#: 1737-07

Urethane rubbers that offer superior performance properties. Molds made with these urethanes will render accurate and uniform colored castings. Applications include making molds to reproduce sculpture and architectural elements.



MC#: 1737-08

These fast-cast resins are formulated to achieve true color representation for cured castings. They are neutral in color and involve adding small amounts of urethane pigments to create a wide range of effects from marble to wood grain.



MC#: 3297-06

Embossed shagreen-look calf skin. Leather made to resemble the look of sanded stingray skins. The advantage is the lower cost and larger piece size that is available compared to genuine stingray skins which are much smaller.



MC#: 3297-07

Durable, laser-cut leather hides. The final effect is produced by a laser, making precise cuts approximately 1/10th of a millimeter into the grain surface. They find application as apparel, footwear, book binding, and can be used for interior surfaces.



MC#: 1930-04

Coated Tyvek® substrate that has been developed specifically for wide format, UV-curable, inkjet and screen printers. The substrate and the proprietary coating combine to offer a recyclable product with superior drapeability and screen printability.



MC#: 3297-08

Stingray leather. Stingrays develop oval surfaces on their back that are completely studded with highly abrasion-proof horn beads. The processed fish skins are a by-product of seafood processing. Suitable for furniture cladding.



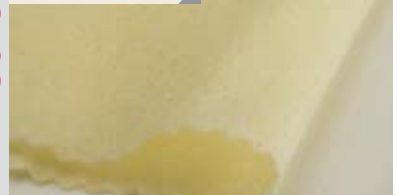
MC#: 3297-09

Natural hair-on cow hides used for flooring. Three collections are currently offered with finished leather is an option for borders including rugs made custom to any specification. It passes Class B fire rating according to ASTM E 84.



MC#: 4579-02

These lightweight, breathable, durable nonwoven composites protect the wearer against radiant heat and burns. They are up to 30% lighter than other comparable nonwovens and are highly thermally insulating by reducing the rate of heat transfer.



MC#: 5020-03

A flexible foam mat with incorporated silver nanoparticles. This mat consists of 92% polyvinyl chloride (PVC) and 8% polyester and contains permanently effective silver nanoparticles that provide for a germfree surface.



MC#: 5610-08

Metallic coated canvas. 100% cotton canvas fabrics are coated with silver or gold metallic films composed of polyester and are applied with heat. Current applications for are footwear, bags, and decorative items.



MC#: 6005-06

These FSC (Forest Stewardship Council) certified papers exhibit soft touch properties for letterpress, blind embossing, hot foil stamping, silk-screen printing, and die cutting. These papers are chlorine and acid free, pH neutral and fade resistant.



FEBRUARY 10 MATERIALS UPDATE

Material ConneXion®

CATEGORY INDEX

Carbon	Cement
Metal	Glass
Polymer	Ceramic
Natural	Process

MC#: 6337-02

A plastic-metal hybrid material that exhibits high conductivity and can be processed by injection molding. Complex electric conductor structures can be directly produced by injection molding without the need for additional punching scraps.



MC#: 6360-02

Carbon fiber textile. These extremely lightweight textiles are composed of 55% carbon fiber and exhibit high tensile strength. Applications include use in composite materials, reinforcement for automotive parts, and outdoor accessories.



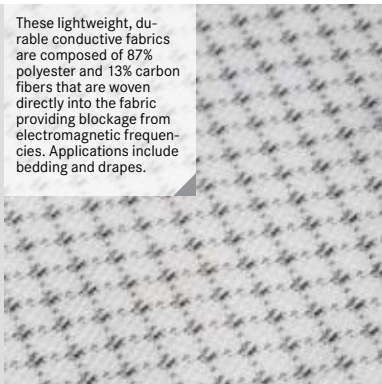
MC#: 6571-04

A multi-metallized fabric with a cobalt alloy top coating that provides exceptional EMF shielding. It comprises of an internal polyester filament layer, coated in successive layers with nickel, copper, nickel and a final cobalt alloy layer.



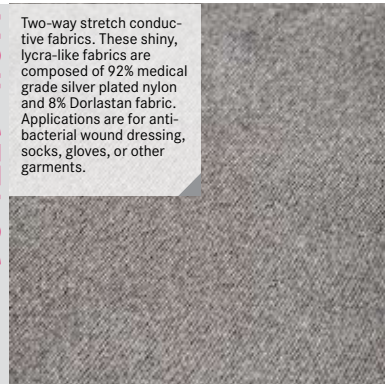
MC#: 6571-05

These lightweight, durable conductive fabrics are composed of 87% polyester and 13% carbon fibers that are woven directly into the fabric providing blockage from electromagnetic frequencies. Applications include bedding and drapes.



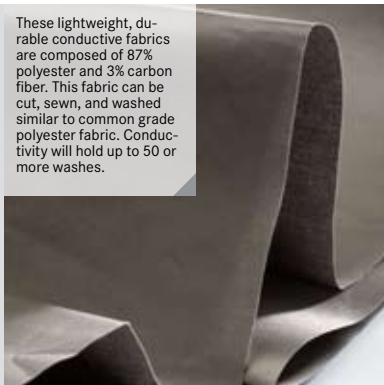
MC#: 6571-06

Two-way stretch conductive fabrics. These shiny, lycra-like fabrics are composed of 92% medical grade silver plated nylon and 8% Dorlastan fabric. Applications are for anti-bacterial wound dressing, socks, gloves, or other garments.



MC#: 6571-07

These lightweight, durable conductive fabrics are composed of 87% polyester and 3% carbon fiber. This fabric can be cut, sewn, and washed similar to common grade polyester fabric. Conductivity will hold up to 50 or more washes.



MC#: 6571-08

These polyester coated electromagnetic shielding fabrics exhibit properties for easy utilization. They are lightweight, durable, flexible and can be cut down to size. The fabric is applied via spray adhesive onto walls.



MC#: 6588-02

Recycled textiles. This range of textiles is composed of discarded fabrics that are composed of a mix of 100% recycled cotton and polyester. They have been awarded the Design Plus Material Vision Award 2009 for innovative interior fabrics.



MC#: 6590-01

A new technology for the continuous manufacturing of curved fiber and fabric reinforced profiles. Applications are the automotive and transport industry, roof construction, aircraft bodies, marine construction, and exterior structure profiles.



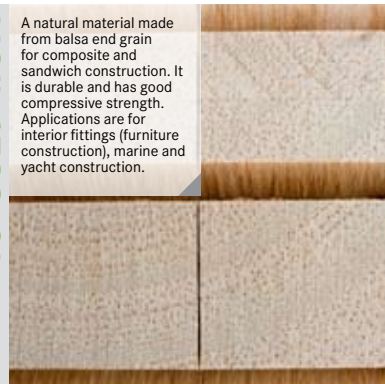
MC#: 6591-01

Leather with various structure and effect embossings that can be hand wiped with a glossy or an effect paint, which creates a glossy or 2-color effect. Applications include furniture and upholstery for the automotive industries.



MC#: 6592-01

A natural material made from balsa end grain for composite and sandwich construction. It is durable and has good compressive strength. Applications are for interior fittings (furniture construction), marine and yacht construction.



FEBRUARY 10 MATERIALS UPDATE

Material ConneXion®

CATEGORY INDEX

Carbon	Cement
Metal	Glass
Polymer	Ceramic
Natural	Process

MC#: 6595-01

Breathable, waterproof thermoplastic polyurethane membrane for apparel. Hydrophilic membranes allow water vapor to diffuse through during humidity gradient across the membrane, but restrict the passage of water droplets.



MC#: 6597-01

Color changing indicator solution used to create colored bubbles. This is the first commercial formulation for producing bubbles that are uniformly colored and that continue to hold the color as they float through the air. Used in graffiti paints.



MC#: 6600-02

Stiff thermoplastic composite that is fully recyclable. This "LM" version is an advancement on the original composite using small amounts of adhesive to laminate layers together, allowing it to be molded at lower temperatures.



MC#: 6593-01

Wall and ceiling panels composed of 80% clay and 20% natural fiber. The tiles offer easy handling, good temperature regulating properties, odor absorbency and recyclability. They are available with either a rough or smooth surface.



MC#: 6596-01

Biodegradable, compostable textiles. These textiles are made from pesticide-free wool and organic ramie processed using non-toxic, biodegradable methods, and dyed with low-impact dyes. Applications include upholstery.



MC#: 6594-01

Ultra-soft silicone elastomer with a texture that simulates soft tissue. This two-part, platinum-catalyzed silicone has a Durometer type 000 hardness of 55. Applications are for encapsulating, and replication surfaces and devices.



MC#: 6596-02

These high performance textiles are certified Cradle to Cradle™ Silver and contribute to points for LEED-CI (MR Credit 1.1-1.4 (water efficiency): 1 point and MR Credit 1.1-1.4, (Cradle to Cradle silver): 1-4 points).



MC#: 6598-01

Hydrophobic and oleophobic coatings for metal, glass, and polymer surfaces. Current applications for the hydrophobic/oleophobic coatings are for eyeglasses, flat panel displays, and stainless steel.



MC#: 6599-01

Acoustical mesh fabrics. These meshes are available with various treatments and finishes. Medical grade materials, permanent hydrophilic and hydrophobic treatments and metallization of nickel, and other metals are available.



MC#: 6601-01

UV cure adhesive that provides high structural strength, rigid bonds on glass, metal, ceramic and glass filled plastics. The product can be cured with the use of broad spectrum, long wave UV-A light, or with no mix activator.



MC#: 6602-01

Non-toxic, water soluble gel used to clean up radioactive and chemical waste and oil. The ready-to-use gel is painted (by brush or trowel) or sprayed onto a surface, encapsulating the contaminants as it dries which can then be peeled away as a film.



FEBRUARY 10 MATERIALS UPDATE

Material ConneXion®

CATEGORY INDEX	Carbon	Cement
	Metal	Glass
	Polymer	Ceramic
	Natural	Process

MC#: 6603-01

Thermochromatic polymer that shifts to a natural resin color when heat is introduced. These thermochromatic dyes can be added to any olefin. Ten standard colors are produced as well as custom formulations.

