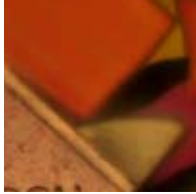


NOVEMBER

2008

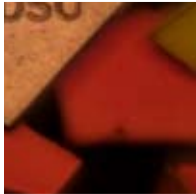
MC#: 1856-04
Pre-finished laminated wood veneers from FSC certified forests. These dyed and multi-laminar wood veneers are available in two backings of either paper or a phenolic impregnated paper. Applications include cabinets and wall panels.



MC#: 3077-05
A pigment additive for plastics and paints that offers a bright silver effect. This magnesium fluoride coated aluminum flakes have a particle size of 18-22 µm and may be blended using conventional equipment into injection molding plastics, paints and coatings, as well as inks.



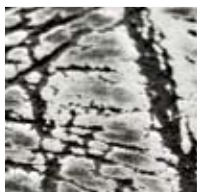
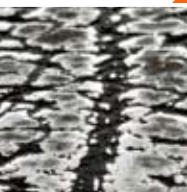
MC#: 3077-04
Tiny printable microstructured taggants that are used to avoid counterfeiting. These additives are invisible to the naked eye but can clearly be seen with a portable, low cost 200 - 400 x magnification microscope. They may be applied to documents, labels, packaging and products.



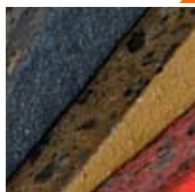
MC#: 3297-04
Waste material (leather scraps) collected as a by-product of the leather industry is glued together into floor and wall tiles. The recycled leather is available in sheets with a ten sheet minimum order. Used for flooring, wall coverings, and cladding.



MC#: 4716-02
Dense, thin, textured concrete tiles. Five times the density of structural concrete tiles, these textured concrete tiles are also thinner, extremely durable and slip-resistant. Applications include indoor and outdoor flooring.



MC#: 4620-02
Hand crafted papers made from 100% recycled cotton. These heavy-weight opaque papers are hand-made and silk-screened in India offering 18 styles in contemporary patterns. These papers exhibit good tear strength for hand-stitching novelty items.



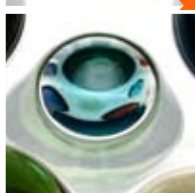
MC#: 4716-03
Terrazzo concrete tiles made using by-product from the granite and marble industry. The manufacturing process meets the quality assurance principles of ISO 9001 and the ISO 14001. Applications include flooring.



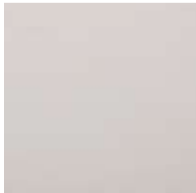
MC#: 4817-06
These highly tactile silicone sheets are composed of two layers; a silicone outer skin and customizable polyurethane spheres. These sheets exhibit good tear resistance and are waterproof for applications as a bathroom mats and wall curtains.



MC#: 4817-05
These highly tactile, customizable polyurethane tiles are created from a number of colorful urethane soft hemispheres. They are UV resistant and waterproof. Used as decorative partitions, seat cushions, wall decorations and furniture applications.



MC#: 5163-02
Glass matrix composites that incorporate silicon carbide fiber. This rigid, light, ceramic like material is an alternative to metals for certain high heat applications. It finds application in handling tools and parts for glass making.



MC#: 5435-02
Polymer composite panels that utilize powder coated aluminum as the external face. These panels utilize two external aluminum faces with a solid color or a clear or prismatic pearlescent coat and an internal thermoplastic core.



MC#: 5208-02
Extremely thin highly reflective films. Made of a thin super-reflective film stretched over a sturdy, light-weight aluminum frame, these shatterproof mirrors are a perfect replacement for heavy, glass mirrors in dance studios, gyms, and fitness centers.



MATERIALS UPDATE

NOVEMBER

2008



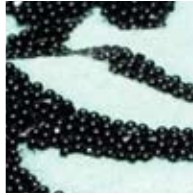
MC#: 5609-04
Bamboo surface tile that is suitable for interior applications. Bamboo slats are adhered to plywood panels with an adhesive. The standard panel sizes are 5.5 x 5.5 and 6 x 6 in (140 x 140 and 152 x 152 mm) and they are offered in natural yellow and carbonized brown. Used for interior applications.



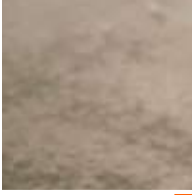
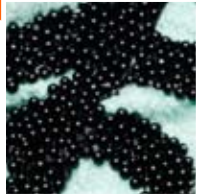
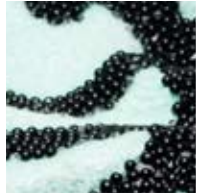
MC#: 5703-02
Elastic linoleum and cork flooring. Two versions of the material are produced with different mixing ratios from the natural raw materials linseed oil, resin, wood flour, pigments, jute, lime stone and cork flour.



MC#: 6254-03
Natural fiber reinforced composites for complex injection molding applications. Two different wood-polymer-compounds can be processed with regular injection molding equipment. Used for the production of parts with high demands on hardness and durability.



MC#: 6068-07
Decors that are printed onto aluminum using lithography. More than 300 standard patterns are possible; among them are various wood and stone decors, metal imitations as well as abstract patterns. Applications are for vertical exterior surfaces (e.g. facades).



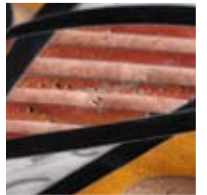
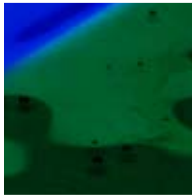
MC# 6251-03
Decors that are directly printed into metal. Decors are printed onto aluminum using lithography with more than 300 standard patterns are possible; among them are various wood and stone decors, and metal imitations. Applications are for vertical exterior surfaces (e.g. facades).



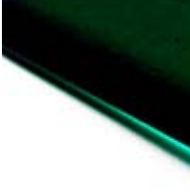
MC#: 6259-02
Customizable float glass tiles for interior applications. These tiles can be customized in colors, patterns, sizes and shapes with minimum quantities applied. Used in both commercial and residential settings for walls and furniture accent pieces.



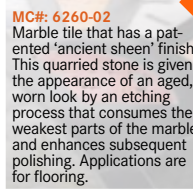
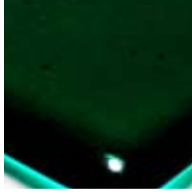
MC#: 6259-04
These fused tiles are composed of opaque and translucent glass. They are available in a wide range of colors and textures, and color matching via Pantone colors. These lightweight tiles can be used in wall installations, and back-splashes.



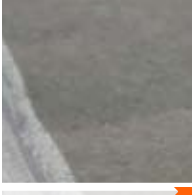
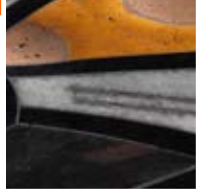
MC#: 6259-03
These spray coated aluminum tiles are suitable for areas with high humidity levels. They are durable, resistant to UV degradation and oxidization in wet environments. These lightweight tiles can be used in wall installations, back-splashes and as accent pieces.



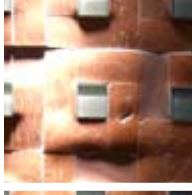
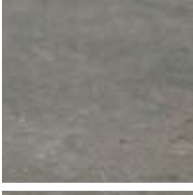
MC#: 6260-05
Terracotta and glass mosaic tiles that mimic the look of 'aged', worn surfaces. This reproduction of the look typically seen in ancient Italian country houses is achieved through a patented process. Applications are for residential and commercial floors and surfaces.



MC#: 6260-02
Marble tile that has a patented 'ancient sheen' finish. This quarried stone is given the appearance of an aged, worn look by an etching process that consumes the weakest parts of the marble and enhances subsequent polishing. Applications are for flooring.



MC#: 6260-04
Natural stone flooring that has a hand worked, smoothed non-porous surface. Applications are for residential and commercial floors and surfaces for bathrooms, kitchens, back-splashes, shower cabins and stairs.



MC#: 6260-06
100 % natural stone with custom edge and surface effects. The following customizable effects can be achieved: straight edge, smoothed handmade edge, tumbled edge, smoothed porous/non-porous surface, brush-hammered surface, and waxed surface.



NOVEMBER

2008

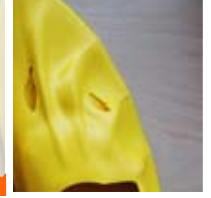
MC#: 6260-07

Handmade and finished terracotta mosaic. Composed of 50% terracotta, 50% marble mosaic with a reproduced worn surface effect that is typical of ancient Italian country houses. Applications include cladding, walls, kitchens and stairs for residential and commercial spaces.



MC# 6289-01

Ethylene vinyl acetate (EVA) foam that may be co-injection molded with two colors. The innovation of this lightweight, durable foam is the ability to simultaneously injection mold, using special patented molds, two different colors.



MC#: 6274-02

Very robust tufted flooring with a high pile, open fiber structure. The top layer of the carpet, made of 100% polyamide fibers (PA) is sewn into a non-woven polypropylene and adhered with latex to a backing consisting of a polypropylene (PP) woven fabric.



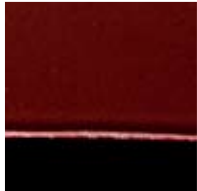
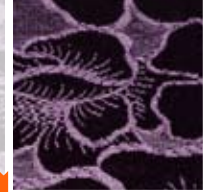
MC#: 6290-01

Powder coatings intended for exterior metal cladding. This polyurethane-based range of decorative and protective finishes provides excellent durability and color retention. Applications are for metals such as steel, titanium, copper, brass, aluminum and bronze.



MC#: 6292-01

Decorative metal sheets that incorporate intricate graphic designs on the surface through printing, etching and deposition. The sheets are durable, fire resistant, may be bent and shaped like aluminum. Used for cladding of interior surfaces in cruise ships and jet aircrafts.



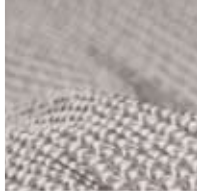
MC#: 6291-01

Flax board composed of waste material taken from the linen industry. Linen is inherently flame resistant, 100% natural and fully recyclable creating a panel with low environmental impact. Applications include doors, furniture, and industrial packaging.



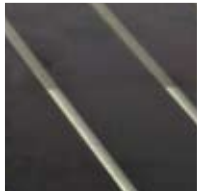
MC#: 6293-01

Thin film solar modules that are easily integrated into building facades. These amorphous silicon (a-Si) sheets are suitable for curtain walls, as façade spandrels and for overhead glazing (skylights). Used for commercial rooftops and solar parking structures.



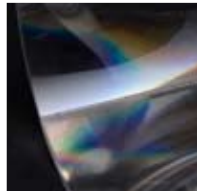
MC#: 6296-01

A system for the effective capturing of daylight and channeling it into interior rooms. This tube comprises of an aluminum tube that is coated on the inside with a highly reflective surface, and a diffuser at the base that directs the light. Applications are for residential and commercial spaces.



MC#: 6294-01

Knit structure textile that acts as a flexible blast protection surface. The material has been constructed such that it expands widthwise when stretched, rather than contracting. Applications are for explosion protection, for hurricane protection, for seatbelts, or even apparel.



MC#: 6297-01

Environmentally friendly water based high gloss finish that is available in uncolored and opaque pigmented varieties. This finish is a low VOC alternative to solvent based high gloss finishes. Used for furniture and doors.



MC# 6299-01

Interactive, programmable lighting module system consisting of single elements that can be assembled to individual lighting scenarios like a jigsaw puzzle. Used for interactive lighting and orchestration in public and residential interiors.



MC# 6298-01

In this patented process, a special polymer is used that is interspersed with magnetic particles to give injection molded parts from PC/ABS, a 3D effect surface. Used for the production and lacquering of home appliances, consumer electronics, and automotive parts.



MATERIALS UPDATE

NOVEMBER

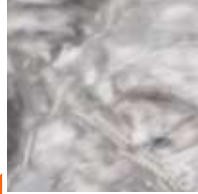
2008



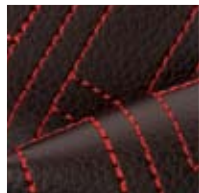
MC#: 6300-01
Water transfer printing for the coating of complex parts. Basically, all primable parts can be printed on with this technique. The process is not suitable for elements that come in direct contact with fire, hot water, food and drinks. Used for automotive, marine and aircraft parts.



MC#: 6301-01
Combinations of fibrillated polyethylene and organza backing, hand stitched expandable monofilament sleeveings, and multi-layered compositions of machine stitched polyethylene sheets have been used as textile design concepts which can be incorporated into soft furnishings and upholstery.



MC# 6304-01
Upholstery, panel interior fabric. Composed of 100% polyurethane face and 50% polyurethane / 41% nylon / 9% polyester backing, this interior textile has an interlinking box pattern. Made using a patented "dry" process, it consumes 0.1% of solvent and requires 1/3 of the energy to produce.



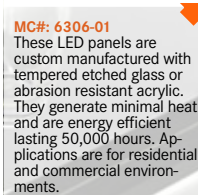
MC# 6304-02
Upholstery, panel interior fabric. Composed of 100% polyurethane face and 60% polyurethane / 40% nylon backing, this interior textile has a faux snake leather pattern. Made using a patented "dry" process, it consumes 0.1% of solvent and requires 1/3 of the energy to produce.



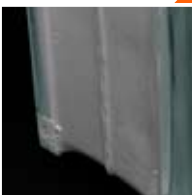
MC#: 6306-01
These LED panels are custom manufactured with tempered etched glass or abrasion resistant acrylic. They generate minimal heat and are energy efficient lasting 50,000 hours. Applications are for residential and commercial environments.



MC#: 6307-01
A range of hollow glass bricks for construction that have decorative patterns cast into the front. The panels are relatively lightweight and have light transmission values from 50-75% depending upon the pattern. The blocks are used for the construction of walls, floors, roofs.



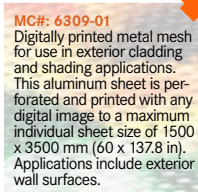
MC# 6308-01
Interior use tiles that are composed of small shell fragments. These mosaic tiles are a standard 50 x 50 mm (2 x 2 in), incorporating a number of "brick lay" formatted chips. The tiles are suitable for work surfaces, countertops, bathroom and kitchen backsplashes and walls.



MC#: 6309-01
Digitally printed metal mesh for use in exterior cladding and shading applications. This aluminum sheet is perforated and printed with any digital image to a maximum individual sheet size of 1500 x 3500 mm (60 x 137.8 in). Applications include exterior wall surfaces.



MC# 6311-01
Cotton and linen interior fabrics printed with distinctive and bold patterns in vibrant colors. These 100% cotton and 100% linen interior fabrics have unique designs from the world's top fabric designers. Applications are for pillows, clothes, curtains, sheets, or panels.



MC#: 6312-01
Resin tile blended with recycled shredded paper. 60% proprietary blend of impervious resin and 40% recycled shredded paper compose these very durable tiles. The material is \$10/sq ft and can be used for countertops, backsplashes, flooring, and wall coverings.



NOVEMBER

2008

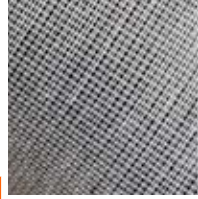
MC#: 6313-01

Highly reflective acrylic paint, designed specifically for the video projection industry. This acrylic paint allows any smooth paintable surface to be transformed into a high performance projection screen. It is made from the highest grade acrylic available and contains no filler materials.



MC#: 6314-02

A range of nonwoven fabrics with good overall performance for use in the apparel industries. These polyester based fabrics may be customized for stiffness, color, size and are available in a standard thickness of 1-3 mm (0.04 to 0.12 in). Used as insoles for footwear and for luggage.



MC#: 6314-01

A low cost range of nonwoven fabrics with good overall performance for use as liners for lamps, wall paper and as window curtain liners. These polyester based fabrics may be customized for softness and size and offer good tear and break strength.



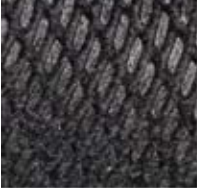
MC#: 6314-03

Stitchbond polyester non-woven that is durable, offers good ventilation, is bacteria resistant, and has a smooth surface and good elasticity. These fabrics may be customized for softness, color, and size. They are used for shoe materials such as lining and innersoles.



MC#: 6316-01

Polyurethane foam alternative. This 100% recyclable product is made of a proprietary blend of polyester fibers with an elastomeric binder. It is flame-resistant eliminating any need for treatment with flame-retardant chemicals. Currently used as cushioning.



MC#: 6315-01

Thermoformable thermoplastic polyolefin (TPO) that offers a high gloss surface. This series of durable polyolefin materials with molded-in color has been designed to exhibit excellent resistance to scratch and mar, reducing damage both during processing and in the field.

