

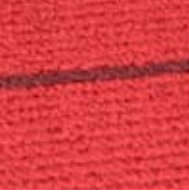
OCTOBER

2008

**MC#: 4872-03**  
100% nylon (PA) loop or cut pile carpeting that incorporates decorative stainless steel inlays. These floor coverings are anti-static, provide slip-resistance, are suitable for furniture and heavy objects.



**MC#: 5231-03**  
The world's first veneers and engineered panel products made from reclaimed wood – all FSC certified and LEED compliant. Applications include interior millwork and furniture.



**MC#: 5231-02**  
Engineered, pre-finished reclaimed teak flooring made from reclaimed tropical hardwoods. This flooring is ideal for installations over radiant heat or wherever a sand-and-finish product is problematic. Applications include interior residential flooring.



**MC#: 5339-04**  
Three-dimensional glass surfaces. These single-layered panels of glass contain convex "cells" depending on the amount of depth and texture desired from the client. Applications are for storefronts, spandrels and partitions.



**MC#: 5566-03**  
Ultra-thin, lightweight and soft flooring with a true stone surface. The veneer is adhered to a rubber backing with a thickness of 1.97 in (50 mm), that consists of recycled car tires. Used for trade shows, show rooms and other temporary applications.



**MC#: 5339-05**  
Opacity coating process for glass. With a similar appearance to sandblasting this coating has a permanently sealed finish that repels grease, dirt, and fingerprints and allows for easy cleaning. This coating can be used indoors or outdoors.



**MC#: 5673-02**  
Naturally colored organically grown cotton that is chemical free. This textile is produced using a low impact cooperative-based method of production. Current applications are for fashion and home furnishings.



**MC#: 6006-05**  
Logos with 3D-optical appearance. The combination of a transparent, lenticular protective polyurethane coating, acrylic glass and a special production technique result in a three-dimensional depth effect in two levels.



**MC#: 5808-06**  
Masterbatch additives for packaging that reduce the UV degradation of the contents of the container. These particulate additives are benzotriazole UV absorbers and are FDA approved for indirect food contact. Applications include food packaging.



**MC#: 6026-02**  
Kerfed particleboard with a flexible latex impregnated paper face that can be formed into various curves and radii. This is a bendable substrate material that's versatility allows for horizontal or vertical grade laminates, metals, 2-ply, and phenolic backed veneers.



**MC#: 6148-03**  
Glazing for architecture that offers a range of UV, heat and impact protection. The glazing is offered in ultra clear, clear, green, light gray, bronze, blue, dark green, neutral pewter, neutral gray, neutral blue, light silver and royal blue.



**MC#: 6027-03**  
Recycled rubber from post-industrial and post-consumer waste. This material features good sound and shock absorption, and slip resistance and is durable. The use of this material can contribute to LEED credits. This material is suitable for installation in healthcare.



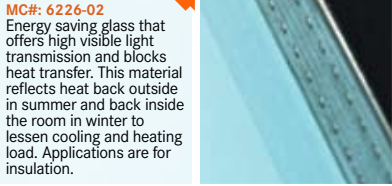
# MATERIALS UPDATE

OCTOBER

2008



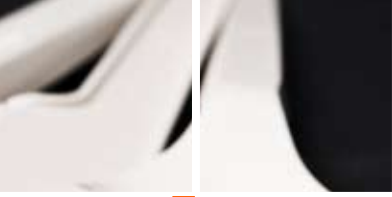
**MC#: 6246-02**  
This environmentally friendly veneer made from 100% bamboo exhibits a surface with closed pores. This material can be processed without glue penetration. Applications are for laminating high-quality surfaces.



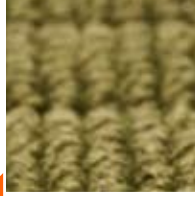
**MC#: 6226-02**  
Energy saving glass that offers high visible light transmission and blocks heat transfer. This material reflects heat back outside in summer and back inside the room in winter to lessen cooling and heating load. Applications are for insulation.



**MC#: 6251-02**  
Flexible, high gloss films for use as laminates on interior and exterior surfaces. PVDF films, known for excellent weathering resistance, high gloss and durability, are printed with a UV resistant graphic to create a range of decorative surfaces.



**MC#: 6274-01**  
Very robust tufted carpet with an individual lateral rib effect and longitudinal stripes. The carpet consists of 100% polyamide (PA) and a spunbonded non-woven backing. Applications are for office spaces and other floors in public buildings.



**MC#: 6254-02**  
Biodegradable cellulose blends. These blends present a compromise of a good biodegradability, resistance to food and a high heat distortion temperature. Used for the production of injection-molded products, as well as heat-resistant cups and trays.



**MC#: 6275-01**  
Decorative cast polymer panels that incorporate natural and handmade items. These rigid sheets are clear polyester with over sixty combinations of materials. The panels are used for architectural interiors such as wall coverings, light boxes, and partitions.



**MC#: 6277-01**  
This dye is a natural chemical pigment from the roots of the Madder plant, a perennial that grows in Europe and is harvested under strict cultivation rights. It is suitable for the dyeing of textiles as well as an additive to paint and lacquer.



**MC#: 6276-01**  
Floor tiles that are manufactured from naturally occurring asphalt (bituminous limestone). The mined resin is heated and pressed at 400 bar (5801 psi) into tile forms 250 x 250, 200 x 100 and 250 x 60 mm (9.84 x 9.84, 7.87 x 3.94 and 9.84 x 2.36 in) in size and 20 to 40 mm (0.7878 to 1.57 in) thick.



**MC#: 6279-01**  
Faux-suede made from recycled PET bottles. This is produced by the first commercial chemical-recycling process without the use of organic solvents. Composition is 88% recycled polyester, 12% polyurethane. Current applications are for home furnishings.



**MC#: 6280-02**  
Easy to install high end luxury leather wall and floor tiles. These tiles are made of 100% genuine cowhide leather tanned with a combination of aniline and vegetable dyes. These tiles are wear-, abrasion-, and fade-resistant used as wall and surface coverings.



**MC#: 6280-01**  
100% full-grain, aniline-dyed European cowhide and calfskin used for high-end luxury applications. A wide range of textures are achieved through hand rubbed finishes that accentuate the natural grain giving appearances of two-, tri- tone effects.



**MC#: 6280-03**  
Extremely stain-resistant proprietary coating for PVC in contract use. This PVC is backed with 65% polyester and 35% cotton and has a proprietary top coating rendering any stains or spills easily cleaned with a dry towel. It can be used for upholstery.



OCTOBER

2008

**MC#: 6280-04**  
Extremely stain-resistant proprietary coating for PVC in contract use. It exhibits superior wear resistance (ASTM D4157 Wyzenbeek), exceeds 100,000 double rubs, excellent fade resistance (AATCC-16), and exceeds 1000 hours UV test. Used for wall coverings.



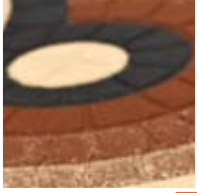
**MC#: 6283-01**  
Long lasting dyes that meet the Global Organic Cotton Standard. This coloring agent can be used with traditional processing methods and is rendered environmentally acceptable, since less color goes into waste water during washing. Currently used for apparel.



**MC#: 6282-01**  
Yarn with microparticles of Germanium, a rock with the semi-conductive and electrical properties between those of a metal and an insulator. The germanium is approximately 5 microns in size and achieves a porous nature that acts as an effective deodorizer.



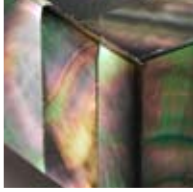
**MC#: 6284-01**  
Waterproof, breathable, glow-in-the-dark fabric for activewear. A coating incorporating a photoluminescent additive is applied to either a polyester or nylon fabric. The coating may be applied to 3-ply constructions with a tricot scrim or merino wool fleece.



**MC#: 6287-01**  
Natural shell laminated to MDF or wood for use as decorative frames. These decorative frames are customizable in shape and size of the Capiz or Mother of Pearl shell used depending on client request. This material is currently being used as decorative frames.



**MC#: 6286-01**  
Unglazed ceramic stoneware for flooring and wall surfaces. These tiles offer a very wide range of sizes, shapes, patterns and colors, in tiles that are stain, impact, heat and frost resistant. Applications are for floor and wall surfaces including factories, institutional spaces.



**MC#: 6288-01**  
A range of engineered oak flooring from deciduous-tree wood-types where oak is processed as a raw material for use in the manufacture of parquet. Applications include residential and commercial flooring, staircases and furniture.

