

SEPTEMBER

2008

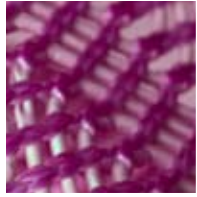
MC#: 1856-03

A range of wood veneers that offer a polymer top surface for improved durability. The sheets are slightly flexible and may be installed on any flat, smooth surface utilizing a bondable back contact adhesive system.



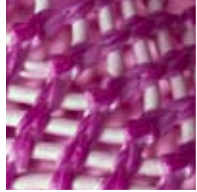
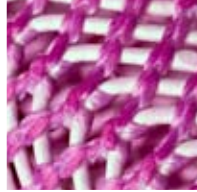
MC#: 5343-18

Woven 2-dimensional textiles with one directional stretch. These durable, synthetic coated yarns create an open weave pattern using PP (polypropylene) yarns in the warp and braided PP based yarns in the weft. Applications include exterior facings for shoes, handbags.



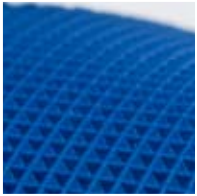
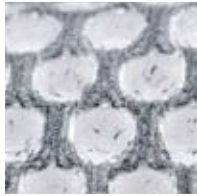
MC#: 5018-03

A variety of boards made of polyethyleneterephthalate (PETG), that are sound absorbing due to a patented process (microperforation). Various hole matrixes in custom arrays are possible. Applications are for interior fittings and furniture construction.



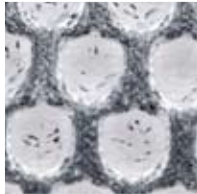
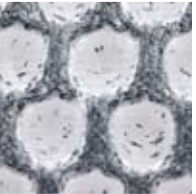
MC#: 5343-19

Retroreflective spacer textile for apparel applications. Retroreflective textiles have the property of reflecting incident light, such as light from a vehicle headlamp. Used for footwear, clothing, backpacks and apparel accessories.



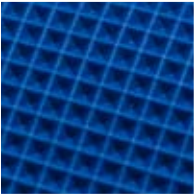
MC#: 5429-08

Printable translucent paper that has a soft feel. The paper may be printed using standard printing processes and finishing operations. Applications are for stationery such as envelopes, invitations and inserts.



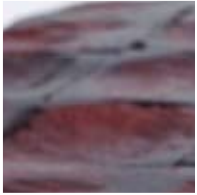
MC#: 5343-21

These polyurethane coated textiles can withstand repeated flexing and have high tensile strength. Its embossed surface gives this material a good grip and is waterproof for outdoor applications. Applications are for sports wear and other clothing accessories.



MC#: 5580-03

A sprayable, viscoelastic polymer composed of modified acrylic latex resin, magnesium silicate, calcium carbonate and mica is engineered for coating nonporous materials. Applications include sound damping.



MC#: 5716-03

Tiles made from recycled coconut shells. This collection consists of three styles that are made from the Bahia coconut endocarp (hard coconut shell) using a patented process. Used for floor and wall resurfacing.



MC#: 5716-02

Colored mosaic panels from small coconut squares. Partially flattened 1.2 x 1.2 in (30 x 30 mm) square tiles are bonded into panels that come in 16.5 x 16.5 in (420 x 420 mm) or 16.5 x 33 in (420 x 762 mm). Applications include flooring and walls.



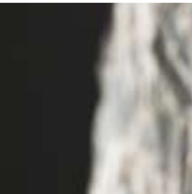
MC#: 5824-02

Cast acrylic sheet that has good optical and light transmission properties. This 100% polymethyl methacrylate (PMMA) resin has been pigmented to give the appearance of ice. Used for retail design, signage, and aquariums.



MC#: 6012-02

A process for the creation of an embossed effect on paperstock with a crystal like reflectivity. This proprietary technique is a lower cost alternative to micro-embossing without an additional step using embossing dyes. Applications are for secondary packaging and stationery.



MC#: 6006-04

Logos with depth effect and hologram-like background. The flexible material is RoHS compliant and exhibits a high resistance against UV-radiation, mechanical stress and acids. The logos and labels are suitable in all industries for product labeling.

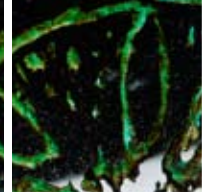
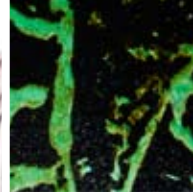
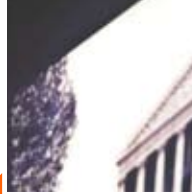


SEPTEMBER

2008



MC#: 6178-05
Flexible plaster sheet that may be applied like wallpaper. The sheet comprises lime mineral plaster on a base paper with a protective top sheet covering the plaster that is removed once installed. Applications are for commercial and residential wall surfaces.



MC#: 6273-01
Satin-finished glass with a uniform, soil-resistant surface. The extra smooth surface finish does not allow body oils to penetrate (fingerprint resistant) and is easy to clean. Applications include interior partitions and insulating glass walls.



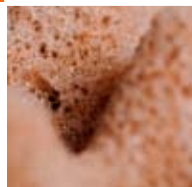
MC#: 6215-02
This custom-designed glass is backed with dichroic film. A liquid resist coating is applied on the front and back of the glass. Current applications include wall mirrors, door inserts, lighting, signage, counter and tabletops.



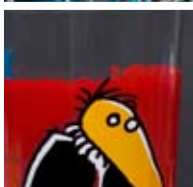
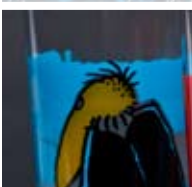
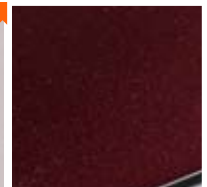
MC#: 6250-01
Flame resistant highly elastic foam. The polyurethane soft foam is produced from polyetherpolyol, diisocyanate, additives and water without using propellants. Applications are for professional cushioning in stadiums, movie theaters, and transportation.



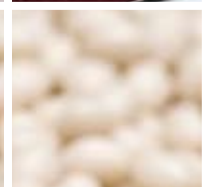
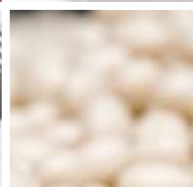
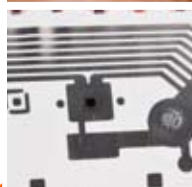
MC#: 6234-02
This non-woven textile is a 60% viscose and 40% steel blend but has the capability to be comprised of steel and any material or man-made fiber in any percentage. The fabric is currently being used as paneling, room dividers, and lighting.



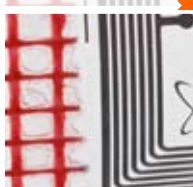
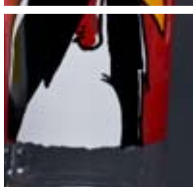
MC#: 6251-01
Decors that are directly printed into metal. Decors are printed onto various metals like aluminum, stainless steel or galvanized steel using lithography. The finished material is non-flammable. Applications are for vertical interior surfaces.



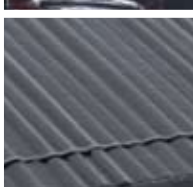
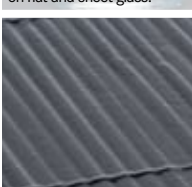
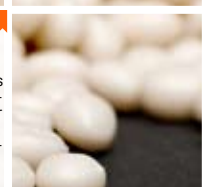
MC#: 6253-01
Textiles for flooring with integrated RFID-tags for navigation and logistic applications. RFID-tags serve as invisible landmarks to support the localization of movable objects as long as they are equipped with a scanner and wireless data communication.



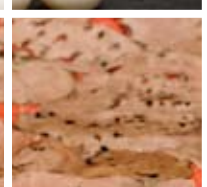
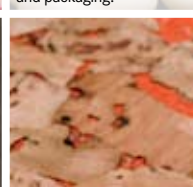
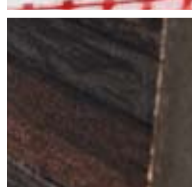
MC#: 6252-01
Environmentally friendly, UV curable screen printing ink for prints on glass. The ink consists of a Cradle to Cradle (C2C) certified pigmented carbon based polymer, that does not contain heavy metals, solvents or halogens. Applications are for printing on flat and sheet glass.



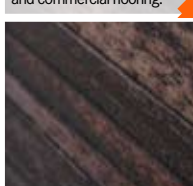
MC#: 6254-01
Biodegradable and compostable PLA-blends for foil applications. These granulates consist of different percentages of PLA (polylactide), further biodegradable polymers as well as mineral fillers. Applications are for blow foils, cast foils, co-extruded products, and packaging.



MC#: 6256-01
Thin strips of wood assembled and glued to a ceramic substrate. This tile meets or exceeds all ISO and ASTM standards for commercial flooring including water absorption, bending strength, shock, stain, frost, and slip-resistance. Applications are for residential and commercial flooring.



MC#: 6255-01
Ceramic wall tile with the appearance of bamboo. Available in 12 x 24 in (304 x 609 mm) or 12 x 12 in (304 x 304 mm) tiles in beige, gold, black and silver. A matte or glossy surface finish is available. The tiles are suitable for interior use on walls.



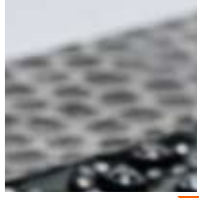
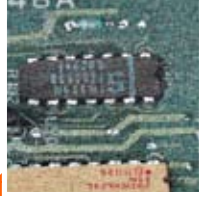
MC#: 6257-01
Thin sliced cork used as a wall covering. This flexible sheet comprises layers of cork adhered to a colored paper backing in a range of different patterns. It may be installed like regular wallpaper and complies with fire standards for commercial spaces.



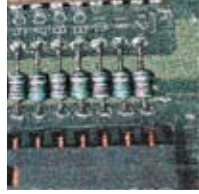
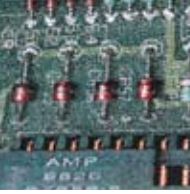
SEPTEMBER

2008

MC#: 6258-01
Electrical circuit textile. Interwoven metal yarns using an intricate weaving technology to create a textile that doubles as an electrical circuit. Potential applications include garments that communicate to integrated diodes and electronic devices.



MC#: 6260-01
Marble tile mosaics that incorporate different shaded layers for decorative effect. The individual mosaic pieces are 1.9 in (48 mm) square blocks composed of layers of colored marble bonded using an epoxy resin. Applications include interior walls and flooring.



MC#: 6259-01
Wall tile comprised of metal, resin and stone. They maintain good moisture-, flame-resistance and can be cleaned with a non-abrasive cleaner. Applications include interior decoration.



MC#: 6261-01
Gold, silver and copper leaf tile. The leafing is applied to the underside of glass tiles, and sealed using a proprietary process, rendering the tiles suitable for wet areas such as showers. The tiles may also be used for vertical surfaces in exterior applications.



MC#: 6262-01
Water permeable flooring that is an alternative to concrete. Composed of stone aggregates and agglutinates but without sand, this exterior flooring product is mixed and poured, similar to concrete. Current applications are for residential patios and parking lots.



MC#: 6261-02
Natural onyx for interior use. The onyx is stocked in 12 x 12 in (304 x 304 mm) tiles, 1.25 x 1.25 in x 3/8 in (31.75 x 31.75 x 9.5 mm) mosaics and 1.25 in (31.75 mm) thick slabs. The onyx is suitable for interior use in residential and commercial applications as floors or walls.



MC#: 6263-01
Low-cost 100% recycled polypropylene derived from discarded plastic bags. This recycled material is available in sheets that are available in widths of 12, 15, 18, 23 in (304, 381, 457, 584 mm). The sheets can be used as packaging and as interior/exterior decoration.



MC#: 6265-01
Decorative wood veneers for furniture and interior surfaces. Veneers from wood from local plantation forests and imported from other countries with FSC lumber available upon request. They may be used for table surfaces, door panels, and furniture surfaces.



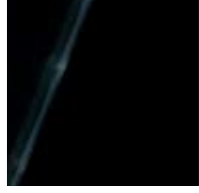
MC#: 6264-01
Sisal fiber that is woven and braided into yarn and rope. The fibers are free of chemical processing and are offered in a range of 'natural' colors. They are suitable for both performance (fishery equipment) as well as aesthetic (carpet and gift wrapping) applications.



MC#: 6266-01
Laminated glass panels that incorporate LED lighting with no visible wires. Clear conductive polymer films are used to transfer electricity to the white or colored LEDs that are embedded in PVB layers. Applications include furniture and automotive applications.



MC#: 6268-01
RFID tags that may be printed using high volume low cost process. The printed tag consists of a thin, flexible, printed electronic circuit, which may contain other, different, electronic components beside the logic circuitry.



MC#: 6267-01
Wood plastic composite (WPC) lumber that is manufactured from recycled household polymer waste. The lumber has a 50 year warranty and is used for exterior decking.



SEPTEMBER

2008



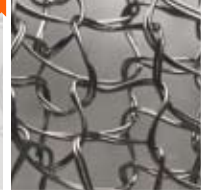
MC#: 6270-01
Mineral wool insulation fiber that comprises up to 90% post-industrial recycled material. The fiber used is a byproduct of the steel industry. It contributes to LEED credits for optimizing energy performance, recycled content, regional materials and innovation in the design process.



MC#: 6269-01
These high tin bronzes, aluminum bronzes and brasses are claimed to be a more environmentally responsible material because they replace heavy metals with alternative alloying elements. They are used for faucets, valves, and fittings.



MC#: 6271-01
A range of metal meshes for interior application. The meshes are composed of stainless steel inter-layered with other materials such as silk and polymer fibers. The meshes may be formed and shaped to any geometry.



MC#: 6272-01
PVC- and phthalate-free inks for textile screen-printing. The proprietary ink does not contain chemicals commonly found on Restricted Substance Lists (RSLs) including PVC, phthalates, aromatic amines (Azo), heavy metals, polychlorinated biphenyls or pesticides.



MC#: 6271-02
Wood floor and wall mosaic tiles that are suitable for some kitchen and bathroom applications. A water resistant epoxy grout that expands and contracts to the same extent as the wood tiles alleviates the problem of grout cracking and failing.

