

# MATERIALS UPDATE

JULY

2008

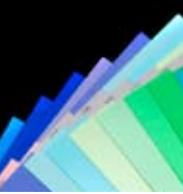
**MC#: 3495-13**  
A double-weave of Lurex ribbon yarns and a layer of organza. The fabric is comprised of 50% Lurex, 40% polyester, and 10% polyamide. It is suitable for interior drapery, as a panel fabric, and for roman shades.



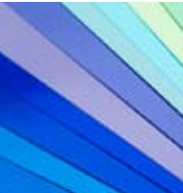
**MC#: 3495-15**  
Fabric made from 60% linen, 20% polyester, and 20% acetate. Abstract leaf patterns are worked in to the fabric using the Jacquard technique. It is suitable for interior drapery, as a panel fabric, and for roman shades.



**MC#: 3495-14**  
A decoration fabric with a pattern reminiscent of Origami, the Japanese art of paper folding. The fabric is 100% Trevira CS, an inherently flame retardant material, is available 102 in wide and a weight of 120gm/m2. It is suitable for interior drapery.



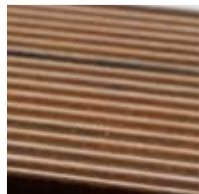
**MC#: 5034-02**  
Panel material made from bamboo used for flooring and furniture. These panels are manufactured from the rapidly renewable trunks of Moso Bamboo grass and made with a low formaldehyde adhesive qualifying the panels for LEED credit.



**MC#: 5000-02**  
An extensive range of aluminum metallized hot stamping foils produced on polyester. This range exhibits good resistance to perfumes and chemical content and excellent adhesion to polyethylene. Applications include cosmetic packaging.



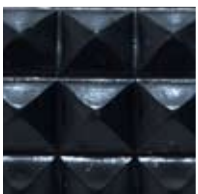
**MC#: 5064-02**  
Elastic flooring made from polyurethane and synthetic rubber granulate (EPDM), partly also made from recycled automobile tires. The material exhibits a high resistance against mechanical stress as well as a high abrasion and slip resistance.



**MC#: 5249-02**  
Thin, stiff wood plastic composites (WPC) that are used as cladding and flooring as an alternative to wood laminates. The panels are a combination of 50% thermoplastic polymer and 50% wood powder.



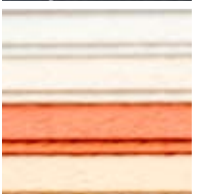
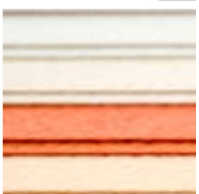
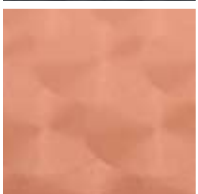
**MC#: 5343-15**  
Textiles with anti-slip properties. These textiles are 95% PVC and 5% polyester with a surface of raised pyramid shaped bumps giving it excellent grip. Currently used for anti-slip applications but could also find use in fashion and design.



**MC#: 5343-16**  
These thermoformable flexible sheets of carbon fiber, Kevlar and metallic glass fiber can be backed and surface finished with polyurethane, polyester, and PVC. The product may be customized, by backing it with different thicknesses.



**MC#: 5692-04**  
A combination of colored and patterned surface coating on steel. The proprietary coating process colors and patterns stainless steel without compromising the look and feel of the metal. This coating may be used for bathroom hardware.



**MC#: 5620-06**  
Decorative wood veneered high pressure laminates for upscale interior fittings. These high pressure laminates are produced by a continuous, environmentally friendly, dry process to E1 quality. Applications are for partitions and furniture.



**MC#: 6005-02**  
FSC certified papers with the feel of leather. This paper is made of chlorine free cellulose, is fade resistant and pH neutral. The papers can be used in offset printing, letterpress, and hot foil stamping, and laser engraving.



JULY

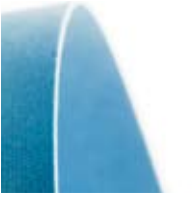
2008



**MC#: 6005-03**  
Papers with a soft feel surface texture. Available in eight golden shades, ranging from transparent to reddish gold, and two white colors. Can be used in offset printing, letterpress, blind embossing, thermography, silk-screen printing, die cutting.



**MC#: 6005-04**  
FSC certified papers with colorshift surface effect and soft feel surface texture. Made from chlorine free cellulose, it is fade resistant and pH neutral. The papers can be used in offset printing, letterpress, blind embossing, laser engraving.



**MC#: 6046-07**  
Japanese wood veneers which can be used for offset printing. These veneers are 0.1mm thin made from Japanese deadwoods that are over 3000 years old. Applications include stationery and interior wall partitions.



**MC#: 6046-08**  
Japanese wood veneers which can be laminated to various substrates. These veneers are 0.1mm thin and are made from a wide range of species including Japanese cypress, beech, and Yaku-cedar. Used for shoe inserts and handbags.



**MC#: 6068-06**  
Tiny cut and round crystals are affixed to a transparent or black hot fix film (more than one million glass crystals per m2). This film can be cut and ironed on, sewn or glued to lace, velvet, and other synthetic fabrics. Used for clothing and accessories.



**MC#: 6088-02**  
Ultra thin, flexible, non-woven ceramic fabrics that are typically used as separators in Li-ion batteries. Their high temperature and corrosion resistance lends them to applications in some consumer products.



**MC#: 6169-02**  
A process that uses water as a foaming agent and enables the fabrication of physically foamed plastic components with conventional injection molding machines. Applications are for components in non-visible areas or masked surfaces.



**MC#: 6178-03**  
Hand crafted Japanese lime plaster blocks system used as interior and exterior wall dividers. The tiles are produced and hardened in a high-pressure vacuum, without the need for a baking process.



**MC#: 6208-01**  
Decorative modular system. These synthetic rubber modular pieces can be fit together like a puzzle to create many different patterns and designs. They can be used as floor and wall coverings.



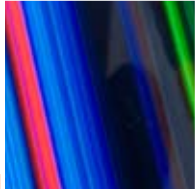
**MC#: 6173-01**  
Rotten wood that has been stabilized by the injection of acrylic. This hybrid material consists of spalted wood that is in-fused with acrylic glass using pressure or vacuum. Applications are for products that are manufactured from wood.



**MC#: 6209-01**  
LED lighting system. A flexible frame system consisting of aluminum and polycarbonate with 928 LED lights/m2 (power LED with integrated control, 90 pictures per second). Applications are for interior and exterior lighting.



**MC#: 6210-01**  
Individually crafted glass composite that permanently combines photographs with glass. The photographs are fused between a coverglass and a special high-pressure laminate. Used for partition walls.

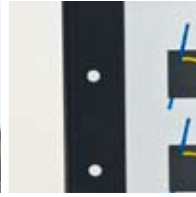




JULY  
2008



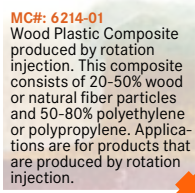
**MC#: 6212-01**  
Molded pulped fiber packaging that utilizes rice straw residue from local agricultural crops. These rigid, relatively tear-resistant and smooth surfaced forms are moldable using standard pulp molding machines. Used for packaging.



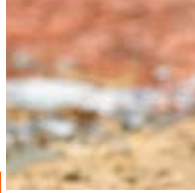
**MC#: 6213-01**  
Patented process which turns a glass pane into a control element/panel for equipment by integrating electronic, sensor and glass technology. Applications are for audio, video and studio equipment.



**MC#: 6211-01**  
Soft, flexible semi-aniline leather that is embroidered with various decors. It is sturdy and has a comfortable grip. Used in automotive and yacht interiors.



**MC#: 6214-01**  
Wood Plastic Composite produced by rotation injection. This composite consists of 20-50% wood or natural fiber particles and 50-80% polyethylene or polypropylene. Applications are for products that are produced by rotation injection.



**MC#: 6215-01**  
Hand applied textures on various types of glass that are suitable for both interior and exterior applications. These textures range from patinas to 3D reliefs utilizing paints, gold leaf as inspirations. Can be applied to backsplashes.



**MC#: 6216-01**  
Rigid interior paneling that utilizes CNC routing to create translucent accents within composite wood veneered panels. Routing of the veneer allows light to pass through the panel, with a range of patterns offered. Used for cabinet doors and furniture.



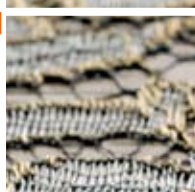
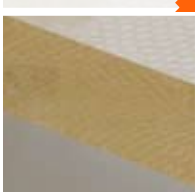
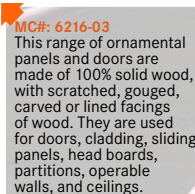
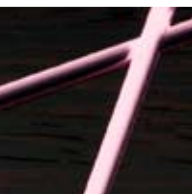
**MC#: 6216-02**  
Ornamental resin marquetry in wood panels. These decorative inlays of resin and wood are adhered to a plywood core. Applications include custom made products for hotels, restaurants, offices, and doors for wardrobe and screens.



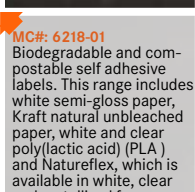
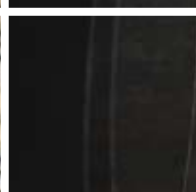
**MC#: 6216-04**  
Rigid interior paneling that utilizes CNC routing to create topographical effects on a solid surface of wood. The panels are laminated to a backing of plywood and a further support sheet. These panels are used for cabinet doors and furniture.



**MC#: 6217-01**  
Rigid, translucent and transparent panels that incorporate lace. Handmade French haute couture lace is embedded in clear acrylic (PMMA) cast sheets. The panels may be used for indoor or outdoor applications.



**MC#: 6217-02**  
Rigid, wood panels that incorporate lace onto the front surface. Handmade french haute couture lace is laminated to sheets of wood and hand painted. Suitable for indoor or outdoor applications and are suitable for decorative paneling and furniture.



**MC#: 6218-01**  
Biodegradable and compostable self adhesive labels. This range includes white semi-gloss paper, Kraft natural unbleached paper, white and clear poly(lactic acid) (PLA) and Natureflex, which is available in white, clear and metallized face.

JULY

2008

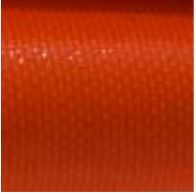
**MC#: 6219-01**  
Wood veneers that are laminated to a non-woven for better processing. Depending on the adhesion, and type of non-woven, the material is available for damp locations or rooms with increased fire protection. Used in the automotive industries.



**MC#: 6221-01**  
Stone cladding that incorporates engraved, decorative surfaces. The slabs are CNC routed in one of 12 different patterns. The slabs have the technical properties of natural stones, and may be laid using adhesive for flooring.



**MC#: 6220-01**  
Silicone impregnated glass fiber fabrics available in light-, medium- and heavy-weight grades. These extremely durable membranes are finished with a hard silicone based top coat on both faces for dirt repellency. Used for tensile structures.



**MC#: 6222-01**  
Modular marble tile that has a two tone effect. These floor and wall surfaces comprise a top marble surface adhered to a different colored marble back panel. The modular system is suitable for cladding of interior and exterior spaces.



**MC#: 6224-01**  
Biodegradable biaxially oriented polypropylene (BOPP) film. A proprietary formulation is added to conventional polypropylene film, which accelerates the degradation of the packaging when it is discarded. Applications are for packaging.



**MC#: 6223-01**  
Tiles and loose surfacing composed of 100% pre-consumer recycled shoe sole rubber. This fire-resistant, non-toxic recycled rubber surfacing contains no carbon black, or sharp shredded steel. These tiles are used for flooring.

