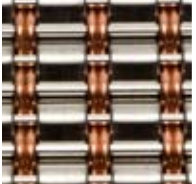
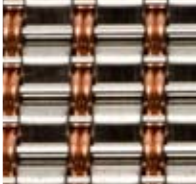


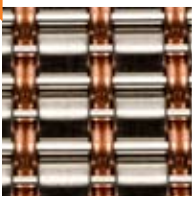
JAN.  
2008



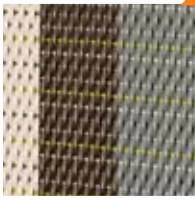
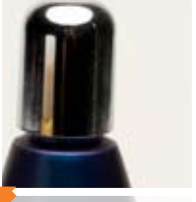
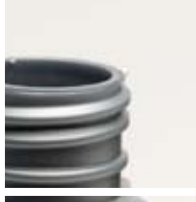
**MC# 0010-13**  
A range of woven textiles that is suitable for high traffic upholstery and wallcoverings. These 100% polyethylene yarn fabrics are hot-press embossed to create permanent patterns that are durable.



**MC# 0162-04**  
Metal mesh screens for interior and exterior use. These rigid meshes are constructed from woven stainless steel, carbon steel, aluminum, bronze and copper. Applications are for all architectural screening.



**MC# 0440-04**  
100% polyvinyl chloride woven flooring that is suitable for high traffic areas. It is color fast fire retardant and resistant to wear from casters. Used for wall and floor surfaces in commercial spaces.

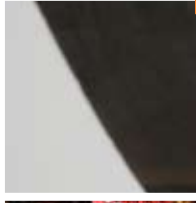
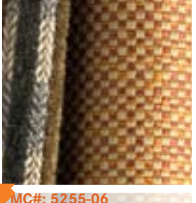
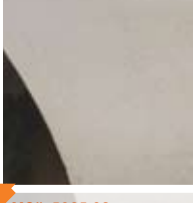


**MC# 4101-03**  
A range of metallic pigment masterbatches that offer a high quality luster with no mold flow lines that are suitable for a wide range of polymers. Used for high volume, low cost molded packaging.



**MC# 4101-04**  
Pigment concentrate for packaging applications that has a color shift effect. This range of pigments offers a uniform interference effect in molded containers with a range of color shifts.

**MC# 4438-08**  
Metallic look drapery textile that may be shaped and formed by hand. This two layer 59% polyester, 41% metal blend translucent fabric is woven 59 in (1499 mm) wide. It is suitable for use in commercial and residential interiors.



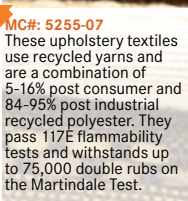
**MC# 5035-03**  
This metal/polymer hybrid will be used to manufacture extremely lightweight components with the strength and stiffness of metal and the design flexibility and lightweight benefits of high performance thermoplastics.



**MC# 5255-06**  
These upholstery textiles that use Climatex Lifecycle and Lifeguard FR yarns are a combination of 60% wool and 40% Lenzing FR or 91% wool and 9% ramie. These textiles pass the California TB17 and withstand 20,000 double rubs on the Martindale Test.

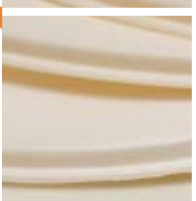


**MC# 5255-07**  
These upholstery textiles use recycled yarns and are a combination of 5-16% post consumer and 84-95% post industrial recycled polyester. They pass 117E flammability tests and withstands up to 75,000 double rubs on the Martindale Test.



**MC# 5255-08**  
These upholstery textiles that use Cradle to CradleCM certified recycled polyester yarns are woven from Eco Intelligent polyester yarn, a Gold certified product. These textiles are suitable for residential or contract use.

**MC# 5827-02**  
These 'Biopolyolefins' replace 50% or more of the fossil-fuel content used in traditional plastic resins with bio-based materials such as starches from corn, tapioca, wheat, and potatoes. Applications are for existing PP uses.



JAN.  
2008



**MC# 6065-02**  
100% bark from the banana tree is woven in a herringbone pattern and backed with tape to ensure a durable construction. Though only recommended as an interior product, they may be used in exterior covered applications.



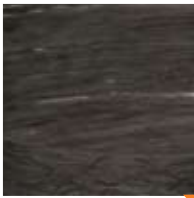
**MC# 6065-03**  
Double-sided laminated bamboo paneling that utilizes crushed Guadua bamboo poles. This three-layer construction is used for interior and exterior applications on walls, countertops and cabinetry.



**MC# 6137-01**  
These masterbatch colorants for use in biodegradable and compostable resins are pigments which are derived from natural sources, mainly plants, and may be added to molded packaging products.



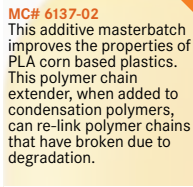
**MC# 6137-02**  
This additive masterbatch improves the properties of PLA corn based plastics. This polymer chain extender, when added to condensation polymers, can re-link polymer chains that have broken due to degradation.



**MC# 6138-01**  
These carbon fiber tapes used in aerospace, automotive, sporting goods have exceptionally thin cross sections. Using a novel spreading technology, the tapes are produced in weights down to 80 g/m<sup>2</sup> even with thicker tows (>12k).



**MC# 6138-02**  
This carbon fiber reinforcement utilizes a very flat structure to reduce bulkiness of the pre-form. The fabrics are used in aerospace, automotive, sporting goods (bicycle frames) and industrial applications (wind turbine blades).



**MC# 6139-01**  
This process creates molded concrete forms using high performance cement. The glossy surface is achieved during the casting. This offers concrete as an alternative material for ceramics, sanitary objects, and decorative objects.



**MC# 6140-01**  
These custom designed woven window treatments are hand loomed using viscose, metallic and glass yarns. The viscose yarns are available in over one hundred shades or may be matched to any client's request.



**MC# 6141-01**  
This inherently fire resistant fiber blend is suitable for industrial workwear. This patented engineered Nomex based fiber blend is one of the lightest weight and most comfortable NFPA 70E Category 2 fabrics on the market today.



**MC# 6142-01**  
Nonwoven fabrics that may be easily heat press molded. These spunbonded polyester sheets exhibit excellent formability by deep drawing and are also lightweight and tear resistant. Potential uses include air permeable containers.

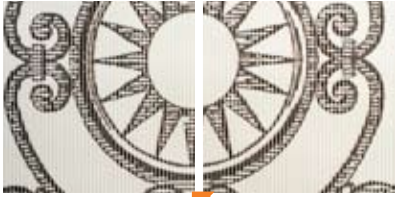


**MC# 6143-01**  
These rigid, tough, fibrous panels have good acoustical properties and are lighter in weight than regular brick. They have good thermal insulation, sound absorption, are non-combustible, weatherproof and termite safe.



**MC# 6144-01**  
Natural filler used as a durable alternative to down and synthetic fills for pillows. 100% Buckwheat hulls that are a byproduct of the food industry are cleaned and dried and used as a fill.

JAN.  
2008



**MC# 6145-01**  
Decorative shades that mimic classical and modern window lattice-work. These mesh roller shades are manufactured from vinyl (PVC) coated fiberglass and are custom produced to order, with a lead time of approximately 1 week.



**MC# 6146-01**  
A process for the creation of blow molded shapes that are bi-color. This co-extrusion of high density polyethylene (HDPE) is a proprietary technology that can produce a range of bottle sizes. The process is used for cosmetic packaging.



**MC# 6147-01**  
This consumer product packaging material reduces significantly the amount of polymer material needed to contain a liquid or solid material. It comprises 40% calcium carbonate with polypropylene (PP) and polyethylene (PE) binding agents.



**MC# 6148-01**  
Permanent protective coatings for glass with exceptional scratch resistance, proven to be 10 times more effective than tempered and chemically strengthened glass. Applications include transportation, store fixtures and display cases.



**MC# 6149-01**  
Offering a more sustainable alternative to some molded plastics, this European automotive leather upholstery manufacturer is now supplying leather fiber reinforced biopolymer resins for various potential applications.

